

Unit 1011 - Slade

1011 - 1551 N Flagler Dr, West Palm Beach, FL, Palm Beach 33401

Unit Information

MLS Number: RX-10962265
 Status: Active
 Size: 1,625 Sq ft.
 Bedrooms: 3
 Full Bathrooms: 2
 Half Bathrooms: 0
 Parking Spaces: Assigned, Garage - Attached, Garage - Building
 View: Intracoastal, Ocean, Pool
 List Price: \$1,049,995
 List PPSF: \$646
 Valuated Price: \$773,000
 Valuated PPSF: \$476

The above valuated price is a baseline figure that does not take into account any specific renovation, upgrade, split, merge, or deterioration of the unit.

Building Information

Number of units: 199
 Number of active listings for rent: 10
 Number of active listings for sale: 16
 Building inventory for sale: 8%
 Number of sales over the last 12 months: 11
 Number of sales over the last 6 months: 9
 Number of sales over the last 3 months: 6

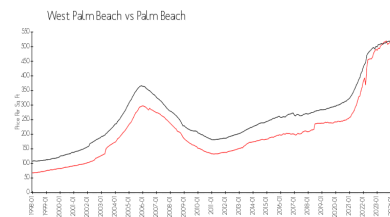
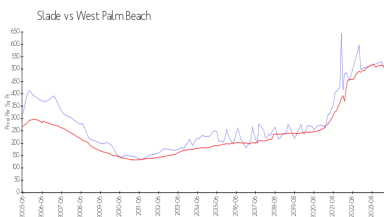
Building Association Information

The Slade Condo Association
 561-653-8230

Recent Sales

Unit #	Size	Closing Date	Sale Price	PPSF
Ph 9	760 sq ft	May 2024	\$300,000	\$395
818	1,400 sq ft	Apr 2024	\$850,000	\$607
1405	1,175 sq ft	Apr 2024	\$555,000	\$472
802	1,175 sq ft	Apr 2024	\$550,000	\$468
602	1,175 sq ft	Mar 2024	\$550,000	\$468

Market Information

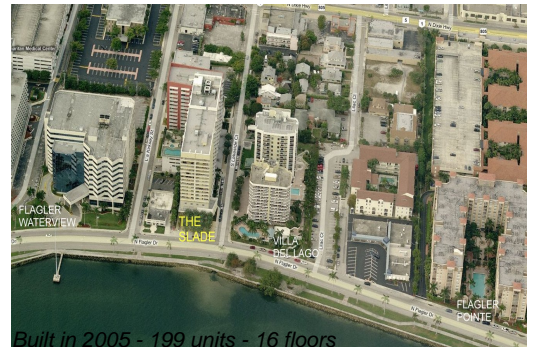


Slade: \$496/sq. ft. West Palm Beach: \$511/sq. ft.
 West Palm Beach: \$511/sq. ft. Palm Beach: \$475/sq. ft.

Inventory for Sale

Slade: 8%
 West Palm Beach: 4%
 Palm Beach: 3%

Avg. Time to Close Over Last 12 Months



Slade
West Palm Beach
Palm Beach

72 days
52 days
56 days