

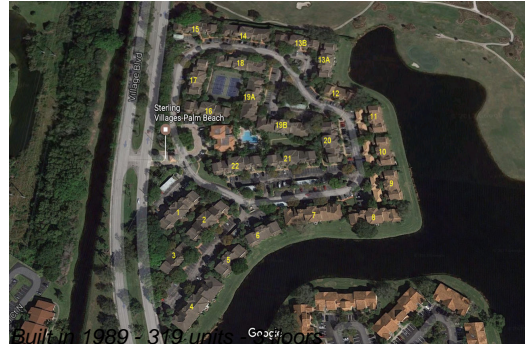
Unit 12103 Glenmoor Dr - Sterling Villages of Palm Beach Lakes

12103 Glenmoor Dr - 1101-22304 Glenmoor Dr, West Palm Beach, FL, Palm Beach 33409

Unit Information

MLS Number: RX-10963125
 Status: Active
 Size: 850 Sq ft.
 Bedrooms: 1
 Full Bathrooms: 1
 Half Bathrooms: 0
 Parking Spaces:
 View: Golf
 List Price: \$200,000
 List PPSF: \$235
 Valuated Price: \$197,000
 Valuated PPSF: \$232

The above valuated price is a baseline figure that does not take into account any specific renovation, upgrade, split, merge, or deterioration of the unit.



Building Information

Number of units: 319
 Number of active listings for rent: 0
 Number of active listings for sale: 15
 Building inventory for sale: 4%
 Number of sales over the last 12 months: 22
 Number of sales over the last 6 months: 13
 Number of sales over the last 3 months: 9

Building Association Information

Sterling Villages-Palm Beach
 Address: 1100 Village Blvd,
 West Palm Beach, FL 33409,
 Phone: +1 561-471-9292

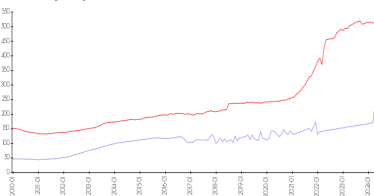
<http://www.thesterlingwpb.com/>

Recent Sales

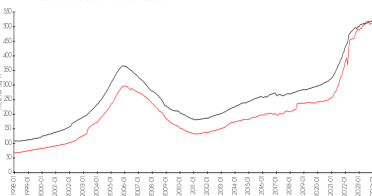
Unit #	Size	Closing Date	Sale Price	PPSF
	850 sq ft	May 2024	\$191,000	\$225
	800 sq ft	Apr 2024	\$180,000	\$225
0	850 sq ft	Apr 2024	\$185,000	\$218
	980 sq ft	Apr 2024	\$227,000	\$232
	800 sq ft	Apr 2024	\$187,000	\$234
	750 sq ft	Apr 2024	\$195,000	\$260

Market Information

Sterling Villages of Palm Beach Lakes vs West Palm Beach



West Palm Beach vs Palm Beach



Sterling Villages of Palm Beach Lakes: \$233/sq. ft.
 West Palm Beach: \$511/sq. ft.

West Palm Beach: \$511/sq. ft.
 Palm Beach: \$475/sq. ft.

Inventory for Sale

Sterling Villages of Palm Beach Lakes	5%
West Palm Beach	4%
Palm Beach	3%

Avg. Time to Close Over Last 12 Months

Sterling Villages of Palm Beach Lakes	36 days
West Palm Beach	52 days
Palm Beach	56 days