

Unit 6-G - Sabal Ridge

6-G - 101 Sabal Ridge Ct, Palm Beach Gardens, FL, Palm Beach 33418

Unit Information

MLS Number: RX-10967047
 Status: Active
 Size: 1,300 Sq ft.
 Bedrooms: 2
 Full Bathrooms: 2
 Half Bathrooms: 0
 Parking Spaces: Assigned
 View:
 List Price: \$349,999
 List PPSF: \$269
 Valuated Price: \$307,000
 Valuated PPSF: \$256

The above valuated price is a baseline figure that does not take into account any specific renovation, upgrade, split, merge, or deterioration of the unit.

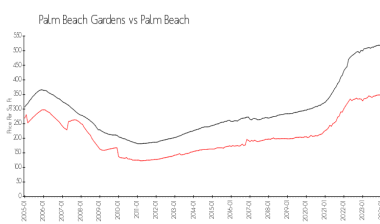
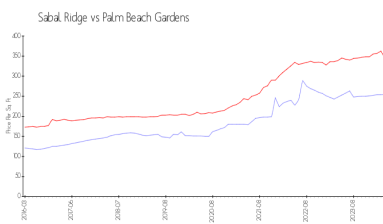
Building Information

Number of units: 184
 Number of active listings for rent: 0
 Number of active listings for sale: 5
 Building inventory for sale: 2%
 Number of sales over the last 12 months: 13
 Number of sales over the last 6 months: 5
 Number of sales over the last 3 months: 5

Recent Sales

Unit #	Size	Closing Date	Sale Price	PPSF
F	1,200 sq ft	Apr 2024	\$270,000	\$225
H	1,400 sq ft	Mar 2024	\$351,000	\$251
H	1,400 sq ft	Mar 2024	\$359,000	\$256
B	1,200 sq ft	Feb 2024	\$360,000	\$300
C	1,200 sq ft	Feb 2024	\$355,000	\$296

Market Information



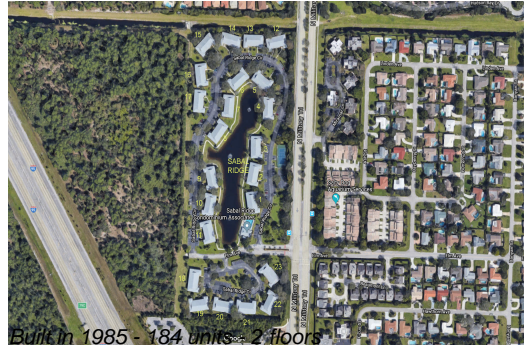
Sabal Ridge:	\$255/sq. ft.	Palm Beach Gardens:	\$342/sq. ft.
Palm Beach Gardens:	\$342/sq. ft.	Palm Beach:	\$475/sq. ft.

Inventory for Sale

Sabal Ridge: 3%
 Palm Beach Gardens: 2%
 Palm Beach: 3%

Avg. Time to Close Over Last 12 Months

Sabal Ridge: 26 days
 Palm Beach Gardens: 47 days
 Palm Beach: 56 days



Built in 1985 - 184 units - 2 floors