

# Unit 305 Mainsail Cir - Sea Colony

305 Mainsail Cir - 101-1909 Mainsail Cir, Jupiter, FL, Palm Beach 33477

## Unit Information

MLS Number:	RX-10969280
Status:	Active
Size:	1,894 Sq ft.
Bedrooms:	2
Full Bathrooms:	2
Half Bathrooms:	0
Parking Spaces:	Garage - Attached, Street
View:	Ocean
List Price:	\$895,000
List PPSF:	\$473
Valuated Price:	\$826,000
Valuated PPSF:	\$509

The above valuated price is a baseline figure that does not take into account any specific renovation, upgrade, split, merge, or deterioration of the unit.

## Building Information

Number of units:	171
Number of active listings for rent:	0
Number of active listings for sale:	3
Building inventory for sale:	1%
Number of sales over the last 12 months:	5
Number of sales over the last 6 months:	4
Number of sales over the last 3 months:	3

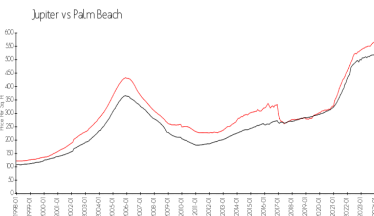
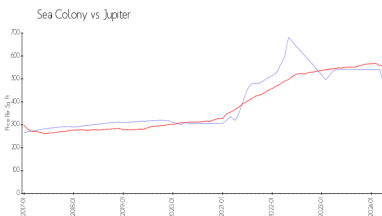
## Building Association Information

Sea Colony Community Association  
 Address: 1910 Mainsail Cir,  
 Jupiter, FL 33477  
 Phone: +1 561-743-5411

## Recent Sales

Unit #	Size	Closing Date	Sale Price	PPSF
1405	1,824 sq ft	Mar 2024	\$760,000	\$417
	1,624 sq ft	Mar 2024	\$827,000	\$509
1601	1,263 sq ft	Mar 2024	\$711,900	\$564
	1,624 sq ft	Jan 2024	\$950,000	\$585
	1,263 sq ft	Aug 2023	\$790,000	\$625

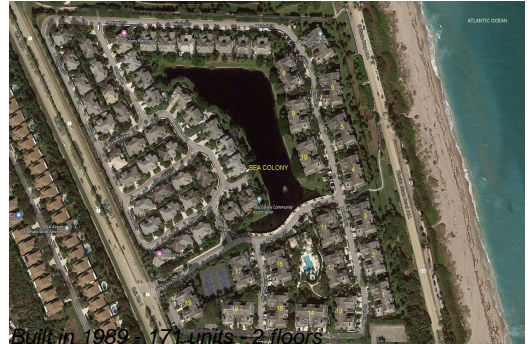
## Market Information



Sea Colony:	\$465/sq. ft.	Jupiter:	\$557/sq. ft.
Jupiter:	\$557/sq. ft.	Palm Beach:	\$475/sq. ft.

## Inventory for Sale

Sea Colony	2%
Jupiter	3%
Palm Beach	3%



## **Avg. Time to Close Over Last 12 Months**

Sea Colony	67 days
Jupiter	66 days
Palm Beach	56 days