

# Unit 8101 Glenmoor Dr - Sterling Villages of Palm Beach Lakes

8101 Glenmoor Dr - 1101-22304 Glenmoor Dr, West Palm Beach, FL, Palm Beach 33409

## Unit Information

MLS Number:	RX-10971060
Status:	Active
Size:	1,130 Sq ft.
Bedrooms:	2
Full Bathrooms:	2
Half Bathrooms:	0
Parking Spaces:	Assigned
View:	Lake
Rental Price:	\$2,349
List PPSF:	\$2
Valuated Price:	\$254,000
Valuated PPSF:	\$225

*The above valuated price is a baseline figure that does not take into account any specific renovation, upgrade, split, merge, or deterioration of the unit.*

## Building Information

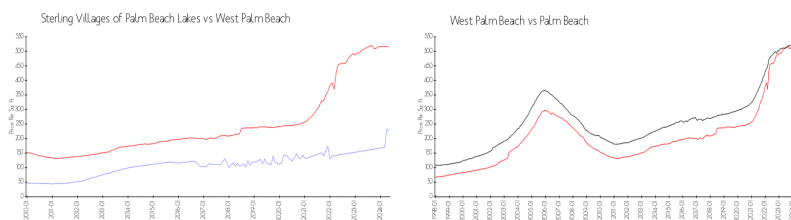
Number of units:	319
Number of active listings for rent:	0
Number of active listings for sale:	12
Building inventory for sale:	3%
Number of sales over the last 12 months:	22
Number of sales over the last 6 months:	13
Number of sales over the last 3 months:	8

## Building Association Information

Sterling Villages-Palm Beach  
Address: 1100 Village Blvd,  
West Palm Beach, FL 33409,  
Phone: +1 561-471-9292

<http://www.thesterlingwpb.com/>

## Market Information



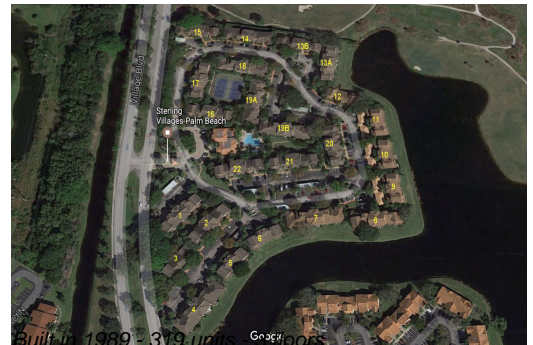
Sterling Villages of Palm Beach Lakes:	\$226/sq. ft.	West Palm Beach:	\$515/sq. ft.
West Palm Beach:	\$515/sq. ft.	Palm Beach:	\$476/sq. ft.

## Inventory for Sale

Sterling Villages of Palm Beach Lakes	4%
West Palm Beach	4%
Palm Beach	3%

## Avg. Time to Close Over Last 12 Months

Sterling Villages of Palm Beach Lakes	36 days
---------------------------------------	---------



West Palm Beach  
Palm Beach

53 days  
57 days