

Unit 4515 Cadiz Cir - Paloma

4515 Cadiz Cir - 5001-5099 Dulce Ct, Palm Beach Gardens, FL, Palm Beach 33418

Unit Information

MLS Number: RX-10973162
Status: Active Under Contract
Size: 2,700 Sq ft.
Bedrooms: 3
Full Bathrooms: 3
Half Bathrooms: 0
Parking Spaces: 2+ Spaces, Driveway, Garage - Attached, Vehicle Restrictions
View: Lake
Rental Price: \$4,600
List PPSF: \$2
Valuated Price: \$677,000
Valuated PPSF: \$311

The above valuated price is a baseline figure that does not take into account any specific renovation, upgrade, split, merge, or deterioration of the unit.

Building Information

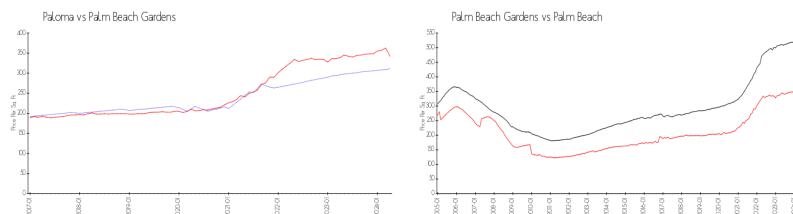
Number of units: 196
Number of active listings for rent: 0
Number of active listings for sale: 5
Building inventory for sale: 2%
Number of sales over the last 12 months: 11
Number of sales over the last 6 months: 5
Number of sales over the last 3 months: 4

Building Association Information

Paloma
Campbell Property Management
jupiter@campbellproperty.com
401 Maplewood Dr. Suite 23
Jupiter, FL 33458
Phone: 561-203-7910
Fax: 561-277-2481

<http://mypalomahoa.com/paloma/home.asp>

Market Information

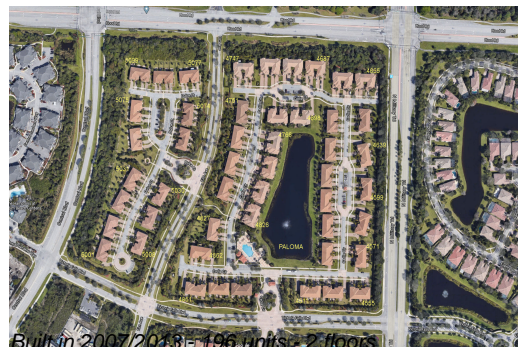


Paloma:	\$311/sq. ft.	Palm Beach	\$342/sq. ft.
Palm Beach	\$342/sq. ft.	Gardens:	
Gardens:		Palm Beach:	\$475/sq. ft.

Inventory for Sale

Paloma	3%
Palm Beach Gardens	2%
Palm Beach	3%

Avg. Time to Close Over Last 12 Months



Paloma	55 days
Palm Beach Gardens	47 days
Palm Beach	56 days