

# Unit 1-135 - Flagler Pointe

1-135 - 1805 N Flagler Drive, West Palm Beach, FL, Palm Beach 33407

## Unit Information

MLS Number: RX-10978548  
 Status: Active  
 Size: 1,071 Sq ft.  
 Bedrooms: 2  
 Full Bathrooms: 2  
 Half Bathrooms: 0  
 Parking Spaces: Assigned,Covered,Garage - Building,Guest,Vehicle Restrictions  
 View: Garden,Pool  
 Rental Price: \$2,500  
 List PPSF: \$2  
 Valuated Price: \$426,000  
 Valuated PPSF: \$398

*The above valuated price is a baseline figure that does not take into account any specific renovation, upgrade, split, merge, or deterioration of the unit.*

## Building Information

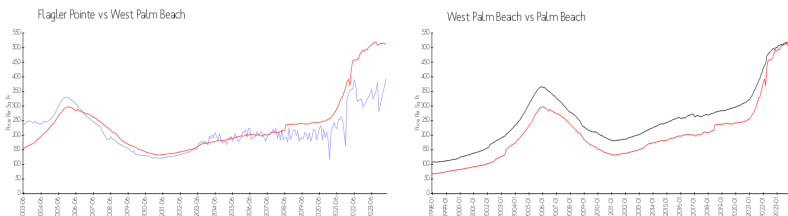
Number of units: 400  
 Number of active listings for rent: 27  
 Number of active listings for sale: 23  
 Building inventory for sale: 5%  
 Number of sales over the last 12 months: 24  
 Number of sales over the last 6 months: 13  
 Number of sales over the last 3 months: 7

## Building Association Information

Flagler Pointe Condominium Association of  
 West Palm Beach, Inc  
 c/o Castle Management, LLC  
 1801 North Flagler Drive  
 West Palm Beach, FL 33407  
 Phone: (561) 822-9970  
 Concierge: (561) 833-7024

<http://flaglerpointe.us/Management-Contacts~301897~20085.htm>

## Market Information



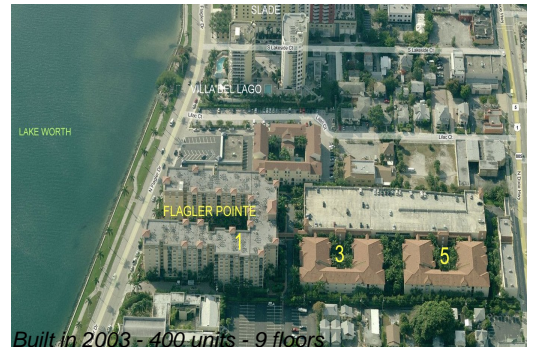
Flagler Pointe: \$394/sq. ft.  
 West Palm Beach: \$511/sq. ft.  
 West Palm Beach: \$511/sq. ft.  
 Palm Beach: \$475/sq. ft.

## Inventory for Sale

Flagler Pointe 6%  
 West Palm Beach 4%  
 Palm Beach 3%

## Avg. Time to Close Over Last 12 Months

Flagler Pointe 67 days



West Palm Beach  
Palm Beach

52 days  
56 days