

# Unit 103E - Ocean Parks (A to O)

103E - 300 N Highway A1A, Jupiter, FL, Palm Beach 33477

## Unit Information

MLS Number:	RX-10980216
Status:	Active
Size:	1,807 Sq ft.
Bedrooms:	3
Full Bathrooms:	3
Half Bathrooms:	0
Parking Spaces:	Carport - Detached, Guest
View:	Garden, Pool, Preserve
List Price:	\$599,900
List PPSF:	\$332
Valuated Price:	\$464,000
Valuated PPSF:	\$274

*The above valuated price is a baseline figure that does not take into account any specific renovation, upgrade, split, merge, or deterioration of the unit.*

## Building Information

Number of units:	328
Number of active listings for rent:	0
Number of active listings for sale:	12
Building inventory for sale:	3%
Number of sales over the last 12 months:	9
Number of sales over the last 6 months:	6
Number of sales over the last 3 months:	3

## Building Association Information

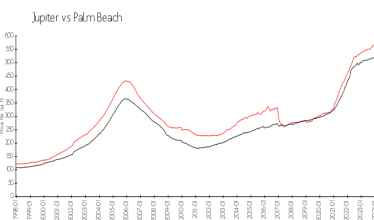
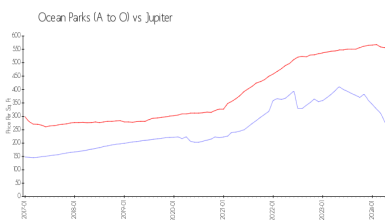
Ocean Parks Office  
 300 N. Ocean Blvd (Hwy. A1A)  
 Jupiter, FL 33477-9510  
 (561) 744-0668  
 (561) 575-2874 (fax)

<https://www.oceanparks.com/>

## Recent Sales

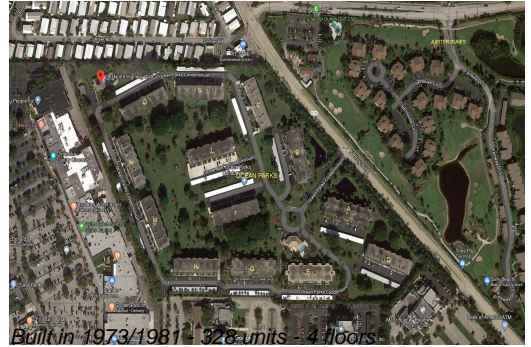
Unit #	Size	Closing Date	Sale Price	PPSF
302m	1,520 sq ft	May 2024	\$380,000	\$250
103o	1,520 sq ft	Apr 2024	\$350,000	\$230
304f	1,520 sq ft	Mar 2024	\$475,000	\$313
102n	1,520 sq ft	Jan 2024	\$635,000	\$418
106n	1,936 sq ft	Dec 2023	\$795,500	\$411

## Market Information



Ocean Parks (A to O):	\$278/sq. ft.	Jupiter:	\$557/sq. ft.
Jupiter:	\$557/sq. ft.	Palm Beach:	\$475/sq. ft.

## Inventory for Sale



Ocean Parks (A to O)	4%
Jupiter	3%
Palm Beach	3%

**Avg. Time to Close Over Last 12 Months**

Ocean Parks (A to O)	68 days
Jupiter	66 days
Palm Beach	56 days