

Unit 360-206 - Kensington of Royal Palm Beach

360-206 - 210-360 Crestwood Cir, Royal Palm Beach, FL, Palm Beach 33411

Unit Information

MLS Number:	RX-10980456
Status:	Pending
Size:	1,568 Sq ft.
Bedrooms:	2
Full Bathrooms:	2
Half Bathrooms:	0
Parking Spaces:	
View:	
Rental Price:	\$2,400
List PPSF:	\$2
Valuated Price:	\$294,000
Valuated PPSF:	\$238

The above valuated price is a baseline figure that does not take into account any specific renovation, upgrade, split, merge, or deterioration of the unit.

Building Information

Number of units:	166
Number of active listings for rent:	0
Number of active listings for sale:	0
Building inventory for sale:	0%
Number of sales over the last 12 months:	5
Number of sales over the last 6 months:	2
Number of sales over the last 3 months:	0

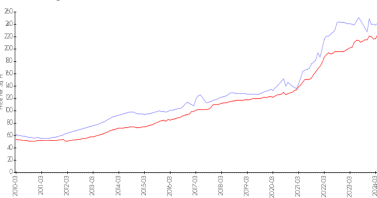
Building Association Information

Kensington of Royal Palm Beach
 c/o GRS Management Associates
 3900 Woodlake Blvd. Suite 309
 Lake Worth, FL 33463
 TEL: 561-641-8554
 FAX: 561-641-9448

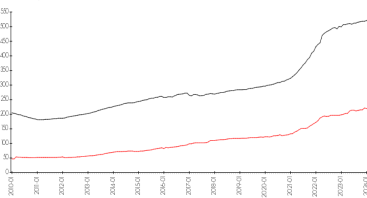
<https://www.grsmgt.com/association/kensington/>

Market Information

Kensington of Royal Palm Beach vs Royal Palm Beach



Royal Palm Beach vs Palm Beach



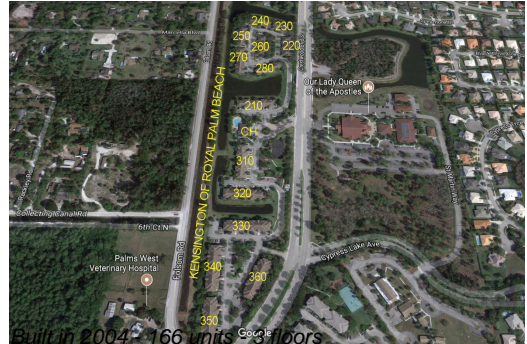
Kensington of Royal Palm Beach: \$242/sq. ft.
 Royal Palm Beach: \$224/sq. ft.

Royal Palm Beach: \$224/sq. ft.
 Palm Beach: \$475/sq. ft.

Inventory for Sale

Kensington of Royal Palm Beach	0%
Royal Palm Beach	1%
Palm Beach	3%

Avg. Time to Close Over Last 12 Months



Kensington of Royal Palm Beach	33 days
Royal Palm Beach	34 days
Palm Beach	56 days