

Unit 37540 Daliha Ter - Eiland Park Townhomes

37540 Daliha Ter - 6246-6379 Timberly Ln, Zephyrhills, FL, Pasco 33542

Unit Information

MLS Number: T3476354
 Status: ACTIVE
 Size: 1,363 Sq ft.
 Bedrooms: 3
 Full Bathrooms: 2
 Half Bathrooms: 1
 Parking Spaces:
 View:
 Rental Price: \$1,975
 List PPSF: \$1
 Valuated Price: \$193,000
 Valuated PPSF: \$142

The above valuated price is a baseline figure that does not take into account any specific renovation, upgrade, split, merge, or deterioration of the unit.

Building Information

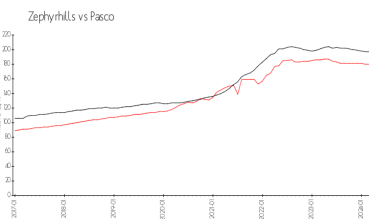
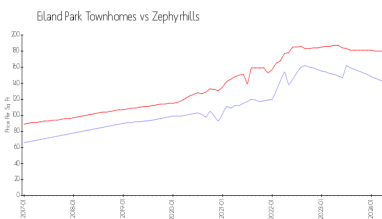
Number of units: 220
 Number of active listings for rent: 0
 Number of active listings for sale: 2
 Building inventory for sale: 0%
 Number of sales over the last 12 months: 5
 Number of sales over the last 6 months: 1
 Number of sales over the last 3 months: 0

Building Association Information

EILAND PARK TOWNHOMES ASSOCIATION
 Rizzetta & Company
 5844 Old Pasco Rd - Ste. 100
 Wesley Chapel, FL 33544
 Phone 813-994-1001
 Fax: 813-994-2100

<http://www.eilandparkhoa.com/eilandpark/>

Market Information

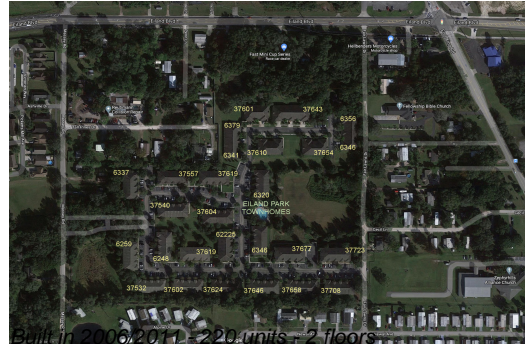


Eiland Park Townhomes:	\$142/sq. ft.	Zephyrhills:	\$180/sq. ft.
Zephyrhills:	\$180/sq. ft.	Pasco:	\$192/sq. ft.

Inventory for Sale

Eiland Park Townhomes: 1%
 Zephyrhills: 1%
 Pasco: 1%

Avg. Time to Close Over Last 12 Months



Eiland Park Townhomes
Zephyrhills
Pasco

50 days
43 days
45 days