

Unit 7780 Timberview Loop - Windchase Villas at Watergrass

7780 Timberview Loop - 32899-33119 Windelstraw Dr, Wesley Chapel, FL, Pasco 33545

Unit Information

MLS Number:	T3510744
Status:	ACTIVE
Size:	1,569 Sq ft.
Bedrooms:	3
Full Bathrooms:	2
Half Bathrooms:	0
Parking Spaces:	Driveway, Garage Door Opener
View:	Water
List Price:	\$349,900
List PPSF:	\$223
Valuated Price:	\$332,000
Valuated PPSF:	\$212

The above valuated price is a baseline figure that does not take into account any specific renovation, upgrade, split, merge, or deterioration of the unit.

Building Information

Number of units:	126
Number of active listings for rent:	0
Number of active listings for sale:	0
Building inventory for sale:	0%
Number of sales over the last 12 months:	0
Number of sales over the last 6 months:	0
Number of sales over the last 3 months:	0

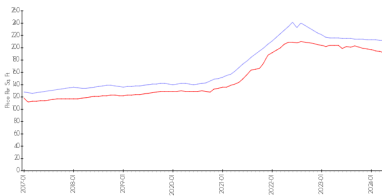
Building Association Information

Windchase Villas at Watergrass
 Address: 32863 Woodthrus Way,
 Wesley Chapel, FL 33545
 Phone: +1 813-388-6831

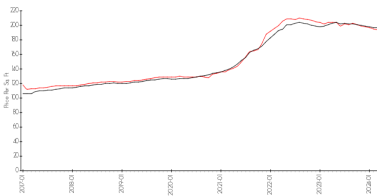
<https://melrosecorporation.com/windchase-at-watergrass-villa/>

Market Information

Windchase Villas at Watergrass vs Wesley Chapel



Wesley Chapel vs Pasco



Windchase Villas at Watergrass: \$212/sq. ft.
 Wesley Chapel: \$192/sq. ft.

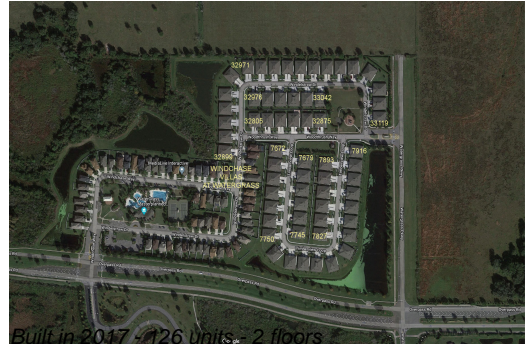
Wesley Chapel: \$192/sq. ft.
 Pasco: \$192/sq. ft.

Inventory for Sale

Windchase Villas at Watergrass	0%
Wesley Chapel	1%
Pasco	1%

Avg. Time to Close Over Last 12 Months

Windchase Villas at Watergrass	19 days
--------------------------------	---------



Wesley Chapel
Pasco

38 days
45 days