

Unit 7840 Timberview Loop - Windchase Villas at Watergrass

7840 Timberview Loop - 32899-33119 Windelstraw Dr, Wesley Chapel, FL, Pasco 33545

Unit Information

MLS Number: T3516077
 Status: ACTIVE
 Size: 1,587 Sq ft.
 Bedrooms: 3
 Full Bathrooms: 2
 Half Bathrooms: 0
 Parking Spaces:
 View: Water
 List Price: \$339,500
 List PPSF: \$214
 Valuated Price: \$336,000
 Valuated PPSF: \$212

The above valuated price is a baseline figure that does not take into account any specific renovation, upgrade, split, merge, or deterioration of the unit.

Building Information

Number of units: 126
 Number of active listings for rent: 0
 Number of active listings for sale: 0
 Building inventory for sale: 0%
 Number of sales over the last 12 months: 0
 Number of sales over the last 6 months: 0
 Number of sales over the last 3 months: 0

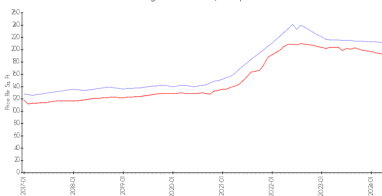
Building Association Information

Windchase Villas at Watergrass
 Address: 32863 Woodthrus Way,
 Wesley Chapel, FL 33545
 Phone: +1 813-388-6831

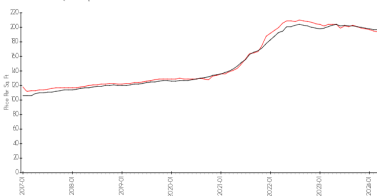
<https://melrosecorporation.com/windchase-at-watergrass-villa/>

Market Information

Windchase Villas at Watergrass vs Wesley Chapel



Wesley Chapel vs Pasco



Windchase Villas at Watergrass: \$212/sq. ft.
 Wesley Chapel: \$192/sq. ft.

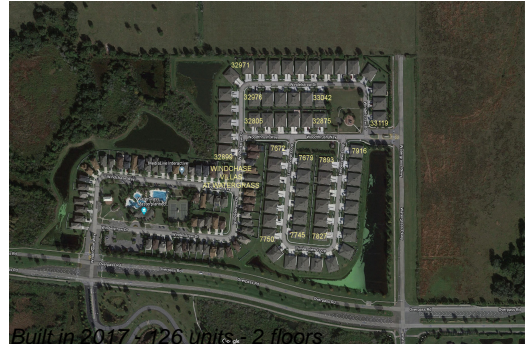
Wesley Chapel: \$192/sq. ft.
 Pasco: \$192/sq. ft.

Inventory for Sale

Windchase Villas at Watergrass: 0%
 Wesley Chapel: 1%
 Pasco: 1%

Avg. Time to Close Over Last 12 Months

Windchase Villas at Watergrass: 19 days



Wesley Chapel
Pasco

38 days
45 days