

# Unit 37658 Aaralyn Rd - Eiland Park Townhomes

37658 Aaralyn Rd - 6246-6379 Timberly Ln, Zephyrhills, FL, Pasco 33542

## Unit Information

MLS Number:	T3517270
Status:	ACTIVE
Size:	156 Sq ft.
Bedrooms:	2
Full Bathrooms:	2
Half Bathrooms:	1
Parking Spaces:	
View:	
List Price:	\$224,900
List PPSF:	\$1,442
Valuated Price:	\$190,000
Valuated PPSF:	\$122

*The above valuated price is a baseline figure that does not take into account any specific renovation, upgrade, split, merge, or deterioration of the unit.*

## Building Information

Number of units:	220
Number of active listings for rent:	0
Number of active listings for sale:	2
Building inventory for sale:	0%
Number of sales over the last 12 months:	5
Number of sales over the last 6 months:	1
Number of sales over the last 3 months:	0

## Building Association Information

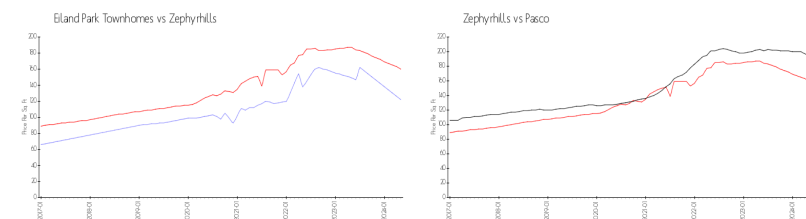
EILAND PARK TOWNHOMES ASSOCIATION  
 Rizzetta & Company  
 5844 Old Pasco Rd - Ste. 100  
 Wesley Chapel, FL 33544  
 Phone 813-994-1001  
 Fax: 813-994-2100

<http://www.eilandparkhoa.com/eilandpark/>

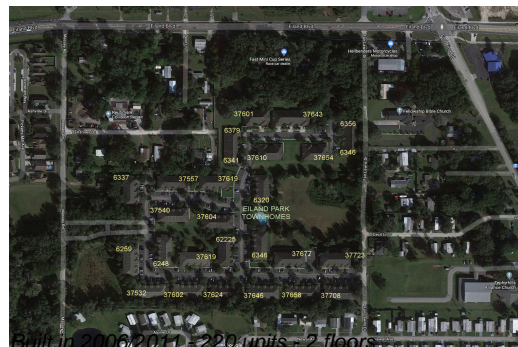
## Recent Sales

Unit #	Size	Closing Date	Sale Price	PPSF
	1,561 sq ft	Jan 2024	\$224,900	\$144
	1,561 sq ft	Aug 2023	\$225,000	\$144
	1,561 sq ft	Jul 2023	\$229,500	\$147
239	1,363 sq ft	Jul 2023	\$240,000	\$176
	1,531 sq ft	Jun 2023	\$230,001	\$150

## Market Information



Eiland Park Townhomes:	\$122/sq. ft.	Zephyrhills:	\$160/sq. ft.
Zephyrhills:	\$160/sq. ft.	Pasco:	\$192/sq. ft.



**Inventory for Sale**

Eiland Park Townhomes	1%
Zephyrhills	1%
Pasco	0%

**Avg. Time to Close Over Last 12 Months**

Eiland Park Townhomes	50 days
Zephyrhills	43 days
Pasco	47 days