

Unit B-1102 - Pelican Bay Yacht Club A&B

B-1102 - 5940 Pelican Bay Plz S, Gulfport, FL, Pinellas 33707

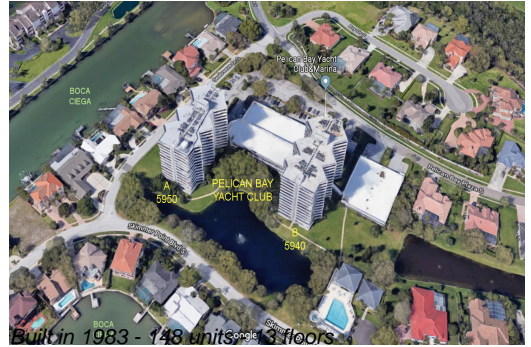
Unit Information

MLS Number: A4583711
 Status: ACTIVE
 Size: 1,912 Sq ft.
 Bedrooms: 3
 Full Bathrooms: 2
 Half Bathrooms: 0
 Parking Spaces: Assigned, Circular Driveway, Covered, Guest, Under Building
 View: Garden, Golf Course, Park/Greenbelt, Pool, Water
 List Price: \$750,000
 List PPSF: \$392



Building Information

Number of units: 148
 Number of active listings for rent: 0
 Number of active listings for sale: 11
 Building inventory for sale: 7%
 Number of sales over the last 12 months: 7
 Number of sales over the last 6 months: 5
 Number of sales over the last 3 months: 2



Building Association Information

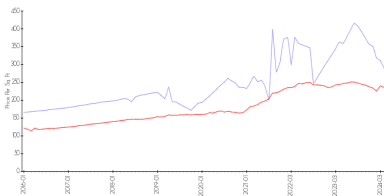
Pelican Bay Yacht Club
 Address: 5940 Pelican Bay Plaza S, Gulfport, FL 33707
 (727) 345-5757

Recent Sales

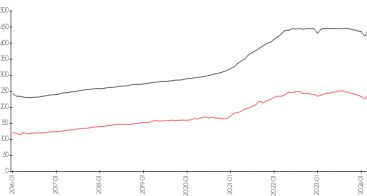
Unit #	Size	Closing Date	Sale Price	PPSF
904	1,476 sq ft	Apr 2024	\$420,000	\$285
1106	1,476 sq ft	Mar 2024	\$650,000	\$440
804	1,476 sq ft	Jan 2024	\$410,000	\$278
705	1,476 sq ft	Dec 2023	\$585,000	\$396
1203	1,476 sq ft	Dec 2023	\$450,000	\$305

Market Information

Pelican Bay Yacht Club A&B vs Gulfport



Gulfport vs Pinellas



Pelican Bay Yacht Club A&B:	\$290/sq. ft.	Gulfport:	\$236/sq. ft.
Gulfport:	\$236/sq. ft.	Pinellas:	\$419/sq. ft.

Inventory for Sale

Pelican Bay Yacht Club A&B: 7%
 Gulfport: 4%
 Pinellas: 3%

Avg. Time to Close Over Last 12 Months

Pelican Bay Yacht Club A&B: 66 days

Gulfport
Pinellas

70 days
62 days