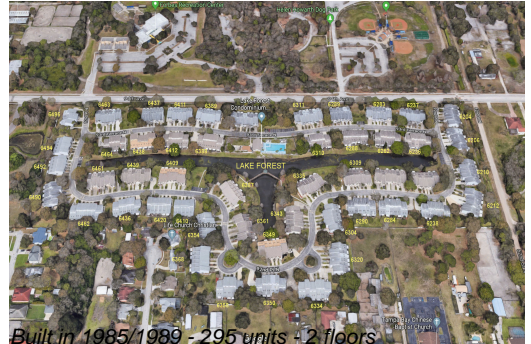


Unit 6358 92nd PI N # 2001 - Lake Forest

6358 92nd PI N # 2001 - 6236-6464 93 Ter N, Pinellas Park, FL, Pinellas 33782

Unit Information

MLS Number: O6159888
 Status: ACTIVE
 Size: 1,620 Sq ft.
 Bedrooms: 3
 Full Bathrooms: 2
 Half Bathrooms: 0
 Parking Spaces: Driveway, Garage Door Opener, Ground Level, Oversized, Workshop in Garage
 View:
 List Price: \$329,000
 List PPSF: \$203



Building Information

Number of units: 295
 Number of active listings for rent: 0
 Number of active listings for sale: 6
 Building inventory for sale: 2%
 Number of sales over the last 12 months: 25
 Number of sales over the last 6 months: 8
 Number of sales over the last 3 months: 5

Building Association Information

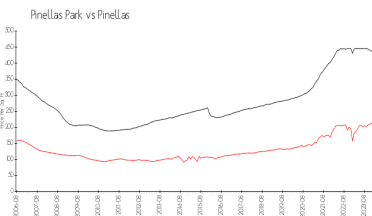
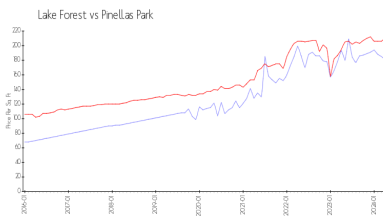
Lake Forest Condominium Association
 Address: 6350 93rd Terrace N,
 Pinellas Park, FL 33782
 Phone: +1 727-546-4764

<https://www.lakeforestcondoassn.com/>

Recent Sales

Unit #	Size	Closing Date	Sale Price	PPSF
303	1,245 sq ft	May 2024	\$255,000	\$205
605	1,190 sq ft	May 2024	\$236,000	\$198
4606	1,620 sq ft	Mar 2024	\$365,000	\$225
2402	1,190 sq ft	Mar 2024	\$265,000	\$223
1004	1,245 sq ft	Mar 2024	\$238,000	\$191

Market Information



Lake Forest:	\$181/sq. ft.	Pinellas Park:	\$210/sq. ft.
Pinellas Park:	\$210/sq. ft.	Pinellas:	\$419/sq. ft.

Inventory for Sale

Lake Forest: 2%
 Pinellas Park: 1%
 Pinellas: 3%

Avg. Time to Close Over Last 12 Months

Lake Forest
Pinellas Park
Pinellas

21 days
21 days
62 days