

Unit 3638 Trafalgar Way # 103 - Waterford at Palm Harbor

3638 Trafalgar Way # 103 - 3510-3588 Wembley Wy, Palm Harbor, FL, Pinellas 33685

Unit Information

MLS Number: T3502134
 Status: ACTIVE
 Size: 1,154 Sq ft.
 Bedrooms: 2
 Full Bathrooms: 2
 Half Bathrooms: 0
 Parking Spaces:
 View: Garden
 List Price: \$329,000
 List PPSF: \$285

Building Information

Number of units: 170
 Number of active listings for rent: 0
 Number of active listings for sale: 2
 Building inventory for sale: 1%
 Number of sales over the last 12 months: 9
 Number of sales over the last 6 months: 3
 Number of sales over the last 3 months: 0

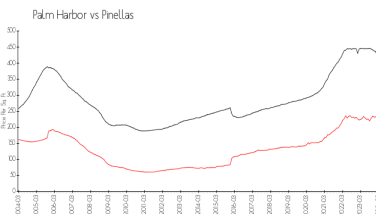
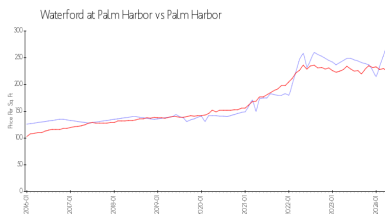
Building Association Information

Waterford Luxury Condominium
 3690 Kings Rd,
 Palm Harbor, FL 34685
 (727) 784-9313

Recent Sales

Unit #	Size	Closing Date	Sale Price	PPSF
106	1,029 sq ft	Jan 2024	\$245,000	\$238
102	1,559 sq ft	Jan 2024	\$300,000	\$192
105	1,559 sq ft	Dec 2023	\$353,700	\$227
102	1,631 sq ft	Nov 2023	\$370,000	\$227
105	1,559 sq ft	Oct 2023	\$372,000	\$239

Market Information

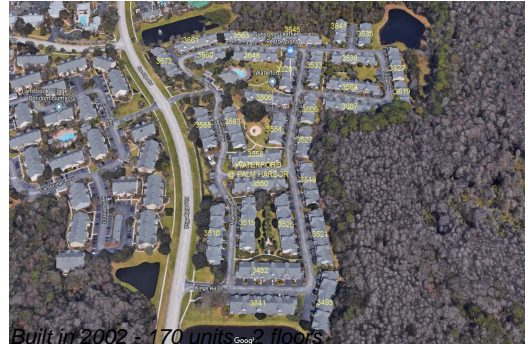


Waterford at Palm Harbor:	\$274/sq. ft.	Palm Harbor:	\$225/sq. ft.
Palm Harbor:	\$225/sq. ft.	Pinellas:	\$419/sq. ft.

Inventory for Sale

Waterford at Palm Harbor: 1%
 Palm Harbor: 2%
 Pinellas: 3%

Avg. Time to Close Over Last 12 Months



Waterford at Palm Harbor
Palm Harbor
Pinellas

33 days
32 days
62 days