

Unit 2092 Sun Down Dr - Sunset Pointe Townhomes

2092 Sun Down Dr - 2520-2531 White Sand Ln, Clearwater, FL, Pinellas 33763

Unit Information

MLS Number:	T3515316
Status:	ACTIVE
Size:	1,252 Sq ft.
Bedrooms:	2
Full Bathrooms:	2
Half Bathrooms:	1
Parking Spaces:	Assigned, Guest
View:	
List Price:	\$299,000
List PPSF:	\$239

Building Information

Number of units:	247
Number of active listings for rent:	0
Number of active listings for sale:	4
Building inventory for sale:	1%
Number of sales over the last 12 months:	9
Number of sales over the last 6 months:	1
Number of sales over the last 3 months:	1

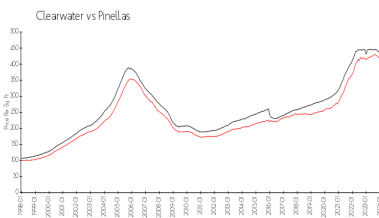
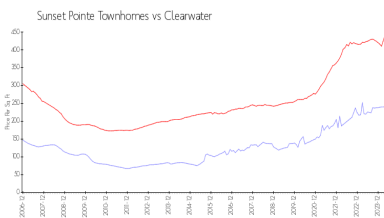
Building Association Information

SUNSET POINTE TOWNHOMES
 HOMEOWNERS ASSOCIATION, INC.
 COMMUNITY ASSOCIATION MANAGEMENT SERVICE
 5680 W CYPRESS ST STE A
 TAMPA FL 33607
 PHONE 813-874-2200
 FAX 813-873-7070

Recent Sales

Unit #	Size	Closing Date	Sale Price	PPSF
	1,473 sq ft	Apr 2024	\$355,000	\$241
	1,274 sq ft	Nov 2023	\$299,000	\$235
	1,252 sq ft	Oct 2023	\$278,300	\$222
	1,629 sq ft	Sep 2023	\$370,000	\$227
	1,429 sq ft	Sep 2023	\$357,000	\$250

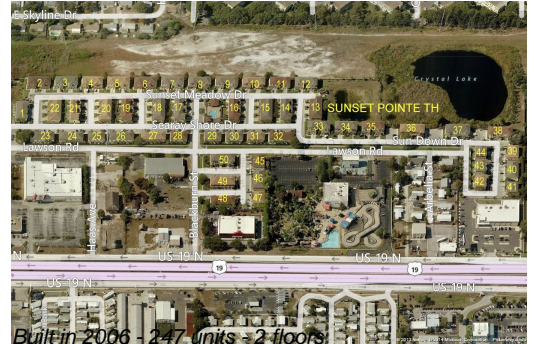
Market Information



Sunset Pointe Townhomes:	\$241/sq. ft.	Clearwater:	\$441/sq. ft.
Clearwater:	\$441/sq. ft.	Pinellas:	\$419/sq. ft.

Inventory for Sale

Sunset Pointe Townhomes	2%
Clearwater	4%
Pinellas	3%



Avg. Time to Close Over Last 12 Months

Sunset Pointe Townhomes	25 days
Clearwater	62 days
Pinellas	62 days