

# Unit 2630 Pearce Dr # 310 - Seville (I-XIV)

2630 Pearce Dr # 310 - 2623-2699 Seville Blvd, Clearwater, FL, Pinellas 33764

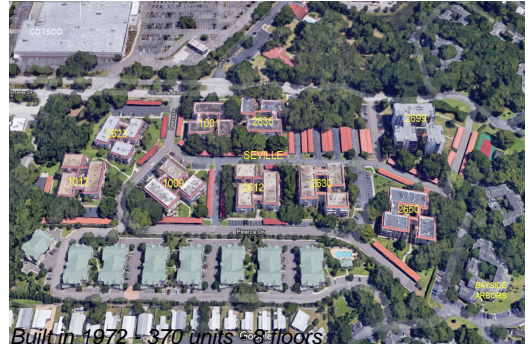
## Unit Information

MLS Number: U8219369  
 Status: ACTIVE  
 Size: 1,150 Sq ft.  
 Bedrooms: 2  
 Full Bathrooms: 2  
 Half Bathrooms: 0  
 Parking Spaces: Covered, Guest  
 View:  
 List Price: \$242,900  
 List PPSF: \$211



## Building Information

Number of units: 370  
 Number of active listings for rent: 0  
 Number of active listings for sale: 24  
 Building inventory for sale: 6%  
 Number of sales over the last 12 months: 19  
 Number of sales over the last 6 months: 9  
 Number of sales over the last 3 months: 5



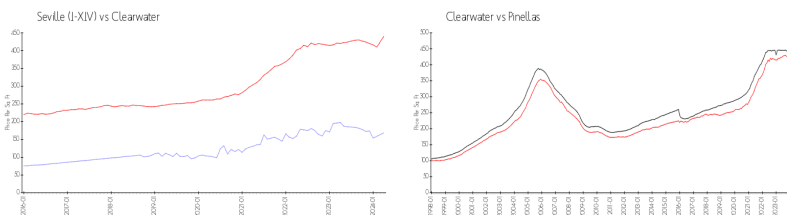
## Building Association Information

Seville Condo Association  
 ADDRESS 1001 Pearce Dr  
 Clearwater FL 33764-1145  
 PHONE (727) 712-3137

## Recent Sales

Unit #	Size	Closing Date	Sale Price	PPSF
201	1,450 sq ft	May 2024	\$235,000	\$162
101	1,450 sq ft	May 2024	\$176,000	\$121
108	775 sq ft	May 2024	\$159,000	\$205
103	1,150 sq ft	May 2024	\$184,000	\$160
507	1,450 sq ft	Apr 2024	\$250,000	\$172

## Market Information



Seville (I-XIV): \$169/sq. ft.  
 Clearwater: \$441/sq. ft.  
 Clearwater: \$441/sq. ft.  
 Pinellas: \$419/sq. ft.

## Inventory for Sale

Seville (I-XIV) 6%  
 Clearwater 4%  
 Pinellas 3%

## Avg. Time to Close Over Last 12 Months

Seville (I-XIV) 52 days  
 Clearwater 62 days  
 Pinellas 62 days