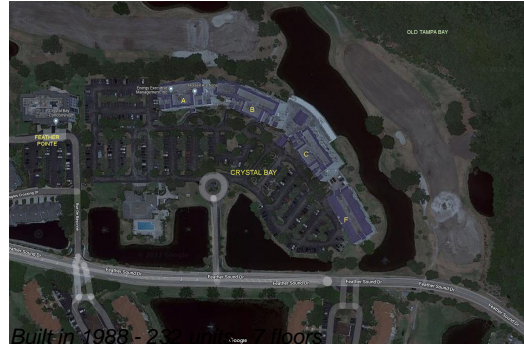


# Unit A101 - Crystal Bay

A101 - 2332 Feather Sound Dr, Clearwater, FL, Pinellas 33762

## Unit Information

MLS Number: U8222897  
 Status: ACTIVE  
 Size: 1,085 Sq ft.  
 Bedrooms: 2  
 Full Bathrooms: 2  
 Half Bathrooms: 0  
 Parking Spaces: Reserved  
 View: Golf Course  
 List Price: \$234,000  
 List PPSF: \$216



## Building Information

Number of units: 232  
 Number of active listings for rent: 0  
 Number of active listings for sale: 17  
 Building inventory for sale: 7%  
 Number of sales over the last 12 months: 15  
 Number of sales over the last 6 months: 4  
 Number of sales over the last 3 months: 0

## Building Association Information

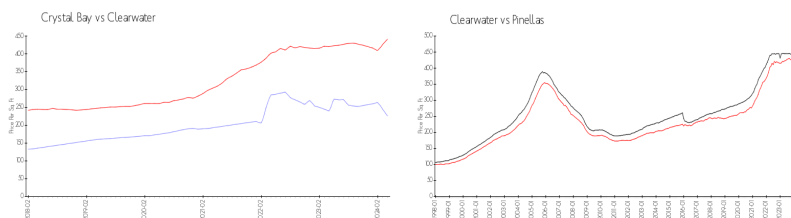
Crystal Bay Condominium  
 Address: 2333 Feather Sound Dr, Clearwater, FL 33762  
 Phone: +1 727-572-4353

<https://www.crystalbaycondo.com/>

## Recent Sales

Unit #	Size	Closing Date	Sale Price	PPSF
A105	1,085 sq ft	Feb 2024	\$310,000	\$286
A707	1,070 sq ft	Feb 2024	\$270,000	\$252
A705	1,070 sq ft	Feb 2024	\$260,000	\$243
305	1,085 sq ft	Nov 2023	\$325,000	\$300
B506	750 sq ft	Sep 2023	\$165,000	\$220
A410	750 sq ft	Sep 2023	\$189,000	\$252
B302	760 sq ft	Sep 2023	\$224,000	\$295

## Market Information



Crystal Bay: \$226/sq. ft.      Clearwater: \$441/sq. ft.  
 Clearwater: \$441/sq. ft.      Pinellas: \$419/sq. ft.

## Inventory for Sale

Crystal Bay: 7%  
 Clearwater: 4%  
 Pinellas: 3%

## Avg. Time to Close Over Last 12 Months

Crystal Bay  
Clearwater  
Pinellas

73 days  
62 days  
62 days