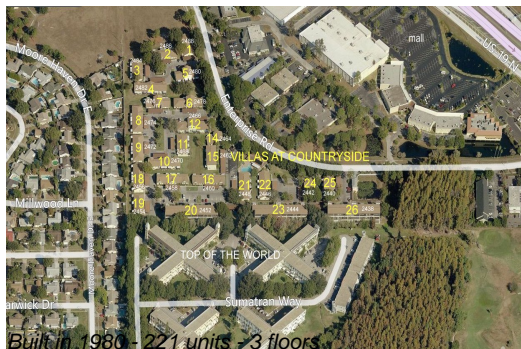


# Unit 2460 Enterprise Rd # 3 - Villas at Countryside

2460 Enterprise Rd # 3 - 2438-2488 Enterprise Rd, Clearwater, FL, Pinellas 33763

## Unit Information

MLS Number: U8225494  
 Status: ACTIVE  
 Size: 593 Sq ft.  
 Bedrooms: 1  
 Full Bathrooms: 1  
 Half Bathrooms: 0  
 Parking Spaces:  
 View:  
 List Price: \$219,900  
 List PPSF: \$371



## Building Information

Number of units: 221  
 Number of active listings for rent: 0  
 Number of active listings for sale: 2  
 Building inventory for sale: 0%  
 Number of sales over the last 12 months: 5  
 Number of sales over the last 6 months: 3  
 Number of sales over the last 3 months: 1

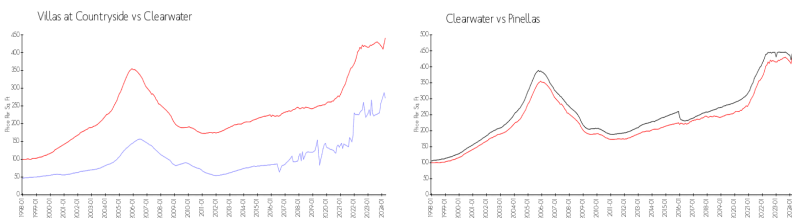
## Building Association Information

VILLAS AT COUNTRYSIDE  
 CONDOMINIUM ASSOCIATION, INC.  
 PROGRESSIVE MANAGEMENT, INC.  
 4151 WOODLANDS PKWY PALM HARBOR FL 3468  
 PHONE 727-773-9542  
 FAX 727-773-8740

## Recent Sales

Unit #	Size	Closing Date	Sale Price	PPSF
15	817 sq ft	Mar 2024	\$240,000	\$294
4	593 sq ft	Jan 2024	\$145,000	\$245
25	817 sq ft	Dec 2023	\$152,000	\$186
3	593 sq ft	Aug 2023	\$167,000	\$282
3	593 sq ft	Jul 2023	\$150,000	\$253

## Market Information



Villas at Countryside: \$272/sq. ft.  
 Clearwater: \$441/sq. ft.  
 Clearwater: \$441/sq. ft.  
 Pinellas: \$419/sq. ft.

## Inventory for Sale

Villas at Countryside 1%  
 Clearwater 4%  
 Pinellas 3%

## Avg. Time to Close Over Last 12 Months

Villas at Countryside  
Clearwater  
Pinellas

24 days  
62 days  
62 days