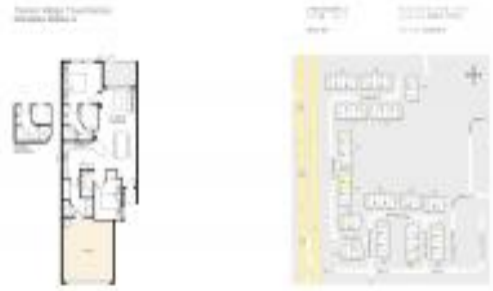


Unit 4783 Michelle Ln - Tarpon Ridge Townhomes

4783 Michelle Ln - 2509-4899 Silverback Ct, Palm Harbor, FL, Pinellas 34684

Unit Information

MLS Number: U8228289
 Status: PENDING
 Size: 1,234 Sq ft.
 Bedrooms: 2
 Full Bathrooms: 2
 Half Bathrooms: 0
 Parking Spaces: Garage Door Opener, Guest
 View: Water
 List Price: \$385,299
 List PPSF: \$312



Building Information

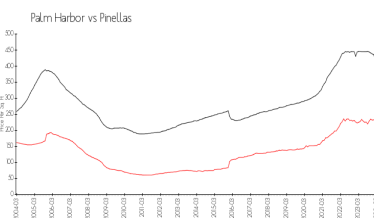
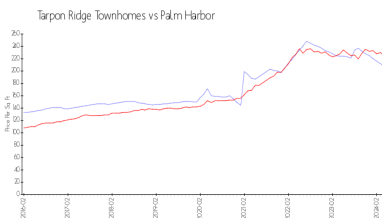
Number of units: 80
 Number of active listings for rent: 0
 Number of active listings for sale: 3
 Building inventory for sale: 3%
 Number of sales over the last 12 months: 5
 Number of sales over the last 6 months: 2
 Number of sales over the last 3 months: 1



Recent Sales

Unit #	Size	Closing Date	Sale Price	PPSF
	2,250 sq ft	Mar 2024	\$485,000	\$216
	2,215 sq ft	Dec 2023	\$485,000	\$219
	2,600 sq ft	Aug 2023	\$575,000	\$221
	2,250 sq ft	Aug 2023	\$480,000	\$213
	2,215 sq ft	May 2023	\$483,500	\$218

Market Information



Tarpon Ridge Townhomes:	\$208/sq. ft.	Palm Harbor:	\$225/sq. ft.
Palm Harbor:	\$225/sq. ft.	Pinellas:	\$419/sq. ft.

Inventory for Sale

Tarpon Ridge Townhomes: 4%
 Palm Harbor: 2%
 Pinellas: 3%

Avg. Time to Close Over Last 12 Months

Tarpon Ridge Townhomes: 28 days
 Palm Harbor: 32 days
 Pinellas: 62 days