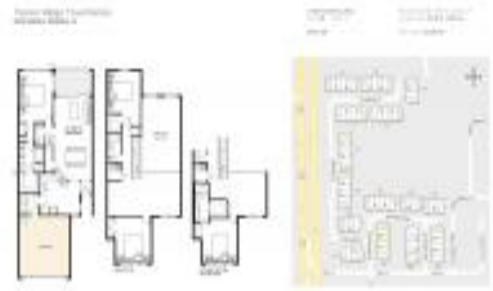


Unit 4739 Silverking Way - Tarpon Ridge Townhomes

4739 Silverking Way - 2509-4899 Silverback Ct, Palm Harbor, FL, Pinellas 34684

Unit Information

MLS Number: U8232895
 Status: ACTIVE
 Size: 2,215 Sq ft.
 Bedrooms: 3
 Full Bathrooms: 2
 Half Bathrooms: 1
 Parking Spaces:
 View: Pool
 List Price: \$489,000
 List PPSF: \$221



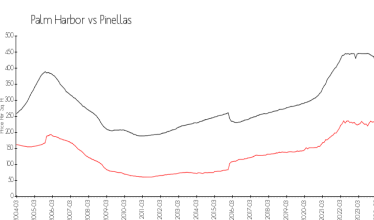
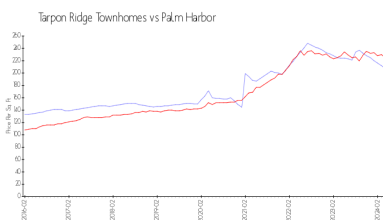
Building Information

Number of units: 80
 Number of active listings for rent: 0
 Number of active listings for sale: 3
 Building inventory for sale: 3%
 Number of sales over the last 12 months: 5
 Number of sales over the last 6 months: 2
 Number of sales over the last 3 months: 1

Recent Sales

| Unit # | Size | Closing Date | Sale Price | PPSF |
|--------|-------------|--------------|------------|-------|
| | 2,250 sq ft | Mar 2024 | \$485,000 | \$216 |
| | 2,215 sq ft | Dec 2023 | \$485,000 | \$219 |
| | 2,600 sq ft | Aug 2023 | \$575,000 | \$221 |
| | 2,250 sq ft | Aug 2023 | \$480,000 | \$213 |
| | 2,215 sq ft | May 2023 | \$483,500 | \$218 |

Market Information



| | | | |
|-------------------------|---------------|--------------|---------------|
| Tarpon Ridge Townhomes: | \$208/sq. ft. | Palm Harbor: | \$225/sq. ft. |
| Palm Harbor: | \$225/sq. ft. | Pinellas: | \$419/sq. ft. |

Inventory for Sale

Tarpon Ridge Townhomes: 4%
 Palm Harbor: 2%
 Pinellas: 3%

Avg. Time to Close Over Last 12 Months

Tarpon Ridge Townhomes: 28 days
 Palm Harbor: 32 days
 Pinellas: 62 days