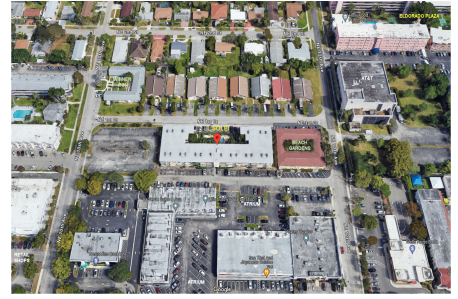


L'Soleil at Hallandale Beach

1100 NE 1 Ct, Hallandale Beach, FL, Broward 33009

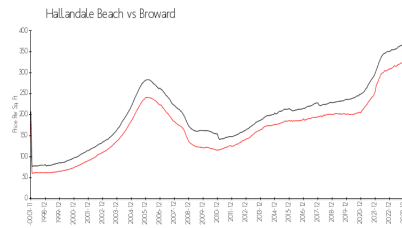
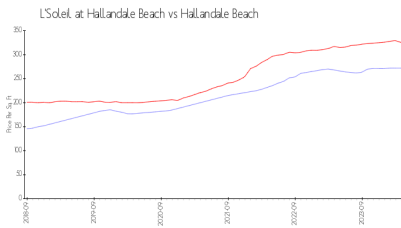
Building Information

Number of units:	59
Number of active listings for rent:	7
Number of active listings for sale:	5
Building inventory for sale:	8%
Number of sales over the last 12 months:	14
Number of sales over the last 6 months:	4
Number of sales over the last 3 months:	0



Built in 1970 - 59 units - 3 floors

Market Information



L'Soleil at Hallandale Beach: \$272/sq. ft.
 Beach:
 Hallandale Beach: \$325/sq. ft.

Hallandale Beach: \$325/sq. ft.
 Broward: \$351/sq. ft.

Inventory for Sale

L'Soleil at Hallandale Beach	8%
Hallandale Beach	4%
Broward	4%

Avg. Time to Close Over Last 12 Months

L'Soleil at Hallandale Beach	14 days
Hallandale Beach	76 days
Broward	67 days