

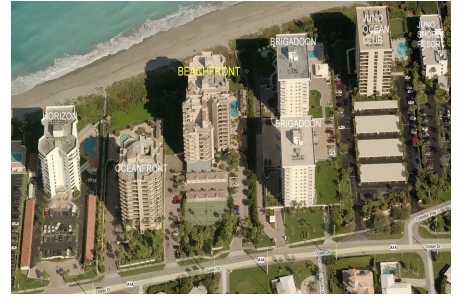
# Beachfront at Juno

530 Ocean Dr, Juno Beach, FL, Palm Beach 33408

## Building Information

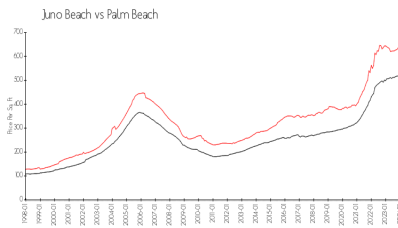
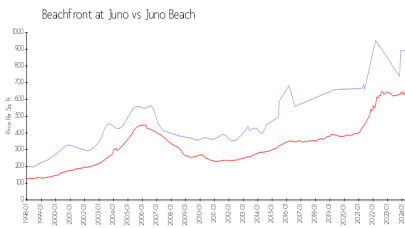
Number of units: 53  
 Number of active listings for rent: 1  
 Number of active listings for sale: 0  
 Building inventory for sale:  
 Number of sales over the last 12 months: 0%  
 Number of sales over the last 6 months: 2  
 Number of sales over the last 3 months: 0

Beach Front at Juno Condo Association  
 530 Ocean Dr Juno Beach 33408  
 (561) 626-0314



Built in 1993 - 53 units - 13 floors

## Market Information



Beachfront at Juno: \$894/sq. ft.  
 Juno Beach: \$642/sq. ft.

Juno Beach: \$642/sq. ft.  
 Palm Beach: \$475/sq. ft.

## Inventory for Sale

Beachfront at Juno  
 Juno Beach  
 0%

Palm Beach

## Avg. Time to Close Over Last 12 Months

Beachfront at Juno 168 days  
 Juno Beach 92 days  
 Palm Beach 56 days