

Unit 603 Ridge Club Dr # 2 - Ridgewood Club

603 Ridge Club Dr # 2 - 601-762 Ridge Club Dr, Melbourne, FL, Brevard 32934

Unit Information

MLS Number:	1008827
Status:	Active
Size:	900 Sq ft.
Bedrooms:	2
Full Bathrooms:	1
Half Bathrooms:	
Parking Spaces:	Additional Parking,Assigned
View:	
List Price:	\$152,000
List PPSF:	\$169
Valuated Price:	\$150,000
Valuated PPSF:	\$167

The above valuated price is a baseline figure that does not take into account any specific renovation, upgrade, split, merge, or deterioration of the unit.

Building Information

Number of units:	96
Number of active listings for rent:	0
Number of active listings for sale:	1
Building inventory for sale:	1%
Number of sales over the last 12 months:	1
Number of sales over the last 6 months:	1
Number of sales over the last 3 months:	1

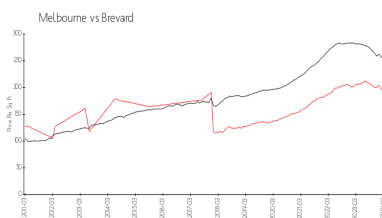
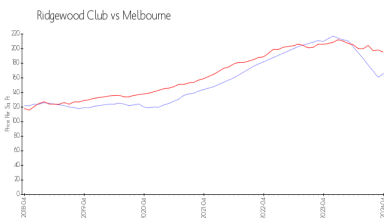
Building Association Information

The Ridgewood Club
 Condominium Association Inc
 600 Ridge Club Dr
 Melbourne, FL 32934

Recent Sales

Unit #	Size	Closing Date	Sale Price	PPSF
79	900 sq ft	Mar 2024	\$164,500	\$183

Market Information



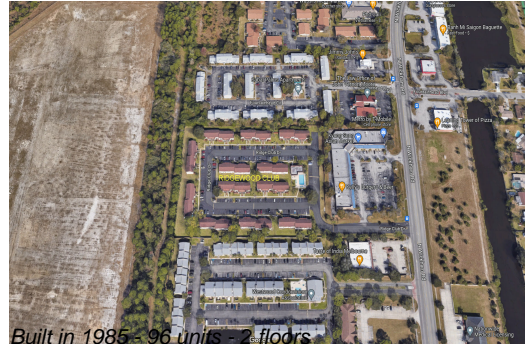
Ridgewood Club:	\$166/sq. ft.	Melbourne:	\$195/sq. ft.
Melbourne:	\$195/sq. ft.	Brevard:	\$226/sq. ft.

Inventory for Sale

Ridgewood Club	1%
Melbourne	0%
Brevard	1%

Avg. Time to Close Over Last 12 Months

Ridgewood Club	n/a
Melbourne	33 days



Brevard

41 days