

Unit 1004 - Sonoma Southside

1004 - 7740 Southside Blvd, Jacksonville, FL, Duval 32256

Unit Information

MLS Number: 2012061
 Status: Active
 Size: 1,505 Sq ft.
 Bedrooms: 3
 Full Bathrooms: 2
 Half Bathrooms:
 Parking Spaces: Assigned
 View:
 List Price: \$157,500
 List PPSF: \$105
 Valuated Price: \$158,000
 Valuated PPSF: \$105

The above valuated price is a baseline figure that does not take into account any specific renovation, upgrade, split, merge, or deterioration of the unit.

Building Information

Number of units: 264
 Number of active listings for rent: 0
 Number of active listings for sale: 2
 Building inventory for sale: 0%
 Number of sales over the last 12 months: 8
 Number of sales over the last 6 months: 4
 Number of sales over the last 3 months: 3

Building Association Information

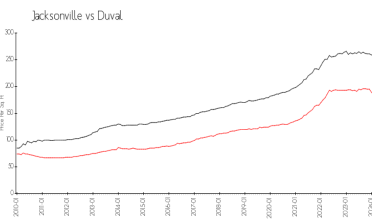
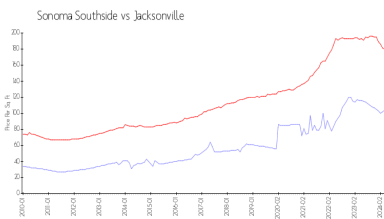
Sonoma Southside
 7740 Southside Blvd,
 Jacksonville, FL 32256.
 (904) 646-1000

<http://www.psdm-sonoma.com/>

Recent Sales

Unit #	Size	Closing Date	Sale Price	PPSF
2703	1,310 sq ft	Apr 2024	\$132,000	\$101
2708	1,310 sq ft	Mar 2024	\$130,000	\$99
2408	1,310 sq ft	Mar 2024	\$135,000	\$103
2106	1,310 sq ft	Feb 2024	\$132,000	\$101
605	1,505 sq ft	Aug 2023	\$160,000	\$106

Market Information

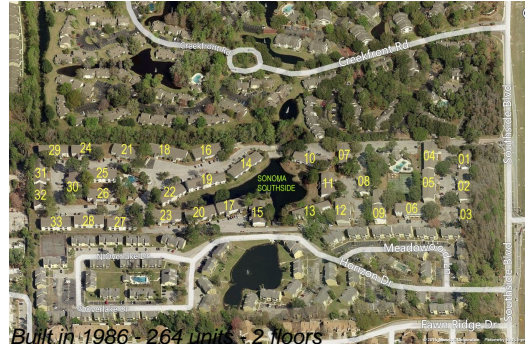


Sonoma Southside: \$104/sq. ft.
 Jacksonville: \$180/sq. ft.

Jacksonville: \$180/sq. ft.
 Duval: \$222/sq. ft.

Inventory for Sale

Sonoma Southside 1%
 Jacksonville 1%



Duval

1%

Avg. Time to Close Over Last 12 Months

Sonoma Southside

n/a

Jacksonville

46 days

Duval

45 days