

Unit 1-335 - Flagler Pointe

1-335 - 1805 N Flagler Drive, West Palm Beach, FL, Palm Beach 33407

Unit Information

| | |
|-----------------|---|
| MLS Number: | A11556335 |
| Status: | Active |
| Size: | 1,071 Sq ft. |
| Bedrooms: | 2 |
| Full Bathrooms: | 2 |
| Half Bathrooms: | |
| Parking Spaces: | Assigned Parking, Guest Parking |
| View: | Intracoastal View, Pool Area View, Water View |
| Rental Price: | \$2,500 |
| List PPSF: | \$2 |
| Valuated Price: | \$435,000 |
| Valuated PPSF: | \$406 |

The above valuated price is a baseline figure that does not take into account any specific renovation, upgrade, split, merge, or deterioration of the unit.

Building Information

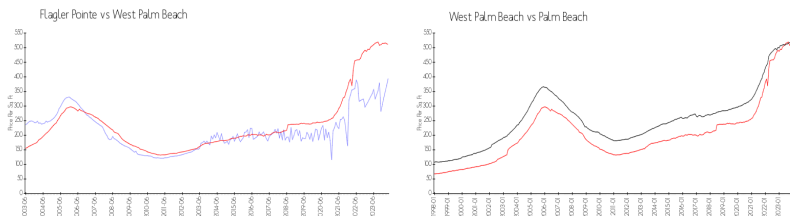
| | |
|--|-----|
| Number of units: | 400 |
| Number of active listings for rent: | 27 |
| Number of active listings for sale: | 23 |
| Building inventory for sale: | 5% |
| Number of sales over the last 12 months: | 24 |
| Number of sales over the last 6 months: | 13 |
| Number of sales over the last 3 months: | 7 |

Building Association Information

Flagler Pointe Condominium Association of West Palm Beach, Inc
 c/o Castle Management, LLC
 1801 North Flagler Drive
 West Palm Beach, FL 33407
 Phone: (561) 822-9970
 Concierge: (561) 833-7024

<http://flaglerpointe.us/Management-Contacts~301897~20085.htm>

Market Information



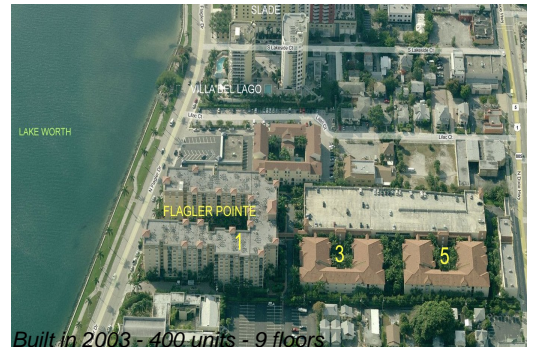
| | | | |
|------------------|---------------|------------------|---------------|
| Flagler Pointe: | \$394/sq. ft. | West Palm Beach: | \$511/sq. ft. |
| West Palm Beach: | \$511/sq. ft. | Palm Beach: | \$475/sq. ft. |

Inventory for Sale

| | |
|-----------------|----|
| Flagler Pointe | 6% |
| West Palm Beach | 4% |
| Palm Beach | 3% |

Avg. Time to Close Over Last 12 Months

| | |
|----------------|---------|
| Flagler Pointe | 67 days |
|----------------|---------|



West Palm Beach
Palm Beach

52 days
56 days