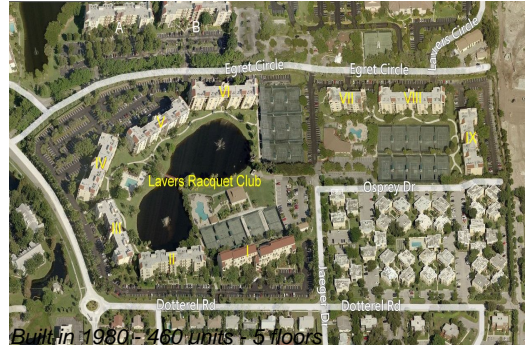


Unit 1303 - Lavers Delray Racquet Club I to IX

1303 - 950 Egret Cir, Delray Beach, FL, Palm Beach 33444

Unit Information

MLS Number:	F10397382
Status:	Active
Size:	1,175 Sq ft.
Bedrooms:	2
Full Bathrooms:	2
Half Bathrooms:	0
Parking Spaces:	Assigned Parking, Guest Parking
View:	Lake
List Price:	\$289,900
List PPSF:	\$247
Valuated Price:	\$369,000
Valuated PPSF:	\$314



The above valuated price is a baseline figure that does not take into account any specific renovation, upgrade, split, merge, or deterioration of the unit.

Building Information

Number of units:	460
Number of active listings for rent:	16
Number of active listings for sale:	15
Building inventory for sale:	3%
Number of sales over the last 12 months:	19
Number of sales over the last 6 months:	9
Number of sales over the last 3 months:	5

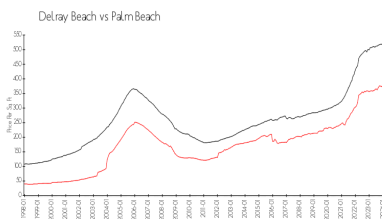
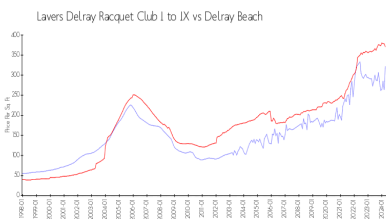
Building Association Information

Lavers Of Delray Racquet Club,
 Delray Racquet Club Association, Inc
 610 Egret Circle
 Delray Beach, FL 33444-7930
 (561) 276-3792

Recent Sales

Unit #	Size	Closing Date	Sale Price	PPSF
3208	1,290 sq ft	Apr 2024	\$385,000	\$298
9210	1,290 sq ft	Mar 2024	\$280,000	\$217
9105	1,175 sq ft	Mar 2024	\$305,000	\$260
5209	1,175 sq ft	Mar 2024	\$335,000	\$285
5511	758 sq ft	Feb 2024	\$208,000	\$274
3210	1,290 sq ft	Feb 2024	\$385,000	\$298

Market Information



Lavers Delray Racquet Club I to IX:	\$322/sq. ft.	Delray Beach:	\$371/sq. ft.
Delray Beach:	\$371/sq. ft.	Palm Beach:	\$475/sq. ft.

Inventory for Sale

Lavers Delray Racquet Club I to IX	3%
Delray Beach	3%

Palm Beach

3%

Avg. Time to Close Over Last 12 Months

Lavers Delray Racquet Club I to IX	87 days
Delray Beach	54 days
Palm Beach	56 days