

Unit 309 - City Walk Pineapple Grove

309 - 200 NE 2 Av, Delray Beach, FL, Palm Beach 33444

Unit Information

MLS Number: RX-10963402
 Status: Active
 Size: 2,132 Sq ft.
 Bedrooms: 2
 Full Bathrooms: 2
 Half Bathrooms: 1
 Parking Spaces: Assigned, Carport - Attached
 View: Other
 List Price: \$1,599,000
 List PPSF: \$750
 Valuated Price: \$1,509,000
 Valuated PPSF: \$708

The above valuated price is a baseline figure that does not take into account any specific renovation, upgrade, split, merge, or deterioration of the unit.

Building Information

Number of units: 40
 Number of active listings for rent: 3
 Number of active listings for sale: 2
 Building inventory for sale: 5%
 Number of sales over the last 12 months: 1
 Number of sales over the last 6 months: 0
 Number of sales over the last 3 months: 0

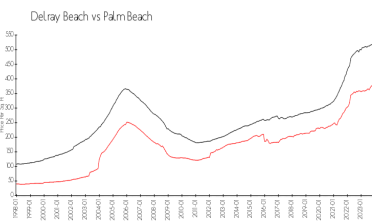
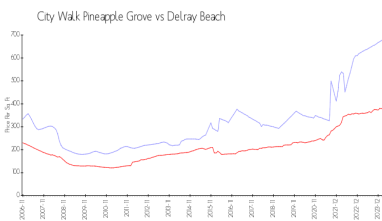
Building Association Information

City Walk At Pineapple Grove
 200 NE 2nd Ave, Delray Beach, FL 33444
 (561) 266-5970

Recent Sales

Unit #	Size	Closing Date	Sale Price	PPSF
410	1,531 sq ft	Oct 2023	\$950,000	\$621

Market Information



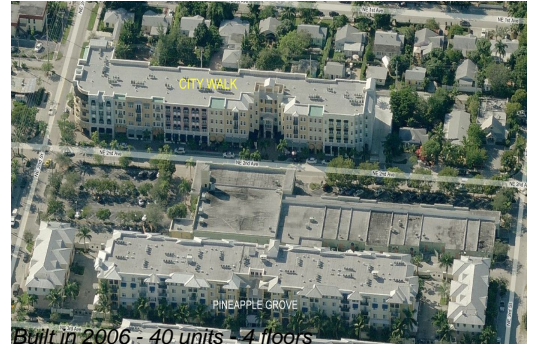
City Walk Pineapple Grove:	\$687/sq. ft.	Delray Beach:	\$371/sq. ft.
Delray Beach:	\$371/sq. ft.	Palm Beach:	\$475/sq. ft.

Inventory for Sale

City Walk Pineapple Grove	5%
Delray Beach	3%
Palm Beach	3%

Avg. Time to Close Over Last 12 Months

City Walk Pineapple Grove	88 days
Delray Beach	54 days



Palm Beach

56 days