

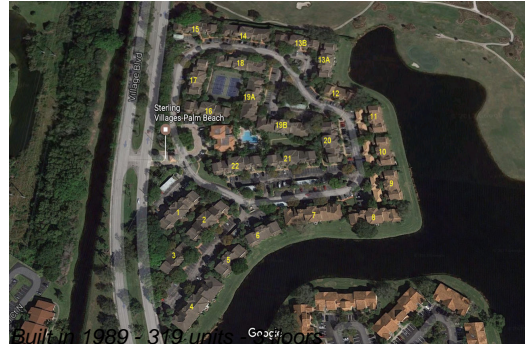
Unit 19218 Glenmoor Dr - Sterling Villages of Palm Beach Lakes

19218 Glenmoor Dr - 1101-22304 Glenmoor Dr, West Palm Beach, FL, Palm Beach 33409

Unit Information

MLS Number:	RX-10971750
Status:	Active
Size:	1,080 Sq ft.
Bedrooms:	2
Full Bathrooms:	2
Half Bathrooms:	0
Parking Spaces:	Assigned
View:	Pool
Rental Price:	\$2,500
List PPSF:	\$2
Valuated Price:	\$253,000
Valuated PPSF:	\$234

The above valuated price is a baseline figure that does not take into account any specific renovation, upgrade, split, merge, or deterioration of the unit.



Building Information

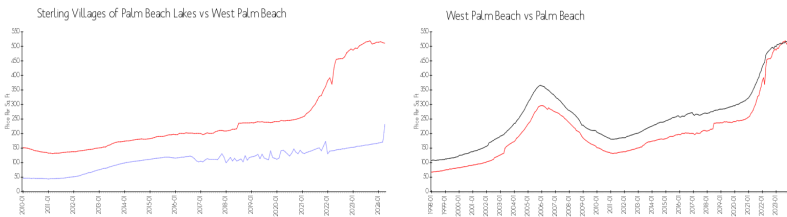
Number of units:	319
Number of active listings for rent:	0
Number of active listings for sale:	14
Building inventory for sale:	4%
Number of sales over the last 12 months:	22
Number of sales over the last 6 months:	13
Number of sales over the last 3 months:	9

Building Association Information

Sterling Villages-Palm Beach
 Address: 1100 Village Blvd,
 West Palm Beach, FL 33409,
 Phone: +1 561-471-9292

<http://www.thesterlingwpb.com/>

Market Information



Sterling Villages of Palm Beach Lakes:	\$233/sq. ft.	West Palm Beach:	\$511/sq. ft.
West Palm Beach:	\$511/sq. ft.	Palm Beach:	\$475/sq. ft.

Inventory for Sale

Sterling Villages of Palm Beach Lakes	4%
West Palm Beach	4%
Palm Beach	3%

Avg. Time to Close Over Last 12 Months

Sterling Villages of Palm Beach Lakes	36 days
---------------------------------------	---------

West Palm Beach
Palm Beach

52 days
56 days