

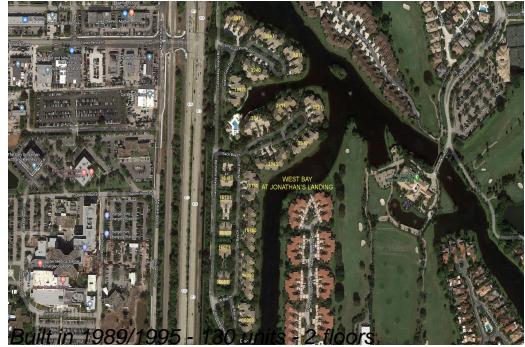
# Unit 3881 Back Bay Dr # 220 - West Bay at Jonathan's Landing

3881 Back Bay Dr # 220 - 3911-3971 Schooner Pointe Dr, Jupiter, FL, Palm Beach 33477

## Unit Information

MLS Number:	RX-10975308
Status:	Active
Size:	1,839 Sq ft.
Bedrooms:	3
Full Bathrooms:	2
Half Bathrooms:	0
Parking Spaces:	Driveway, Garage - Attached, Garage - Building, Golf Cart, Guest
View:	Golf, Lagoon
Rental Price:	\$8,500
List PPSF:	\$5
Valuated Price:	\$790,000
Valuated PPSF:	\$430

*The above valuated price is a baseline figure that does not take into account any specific renovation, upgrade, split, merge, or deterioration of the unit.*



## Building Information

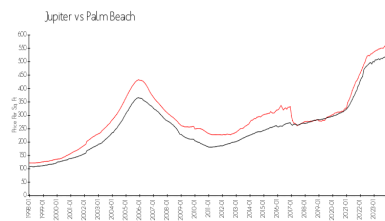
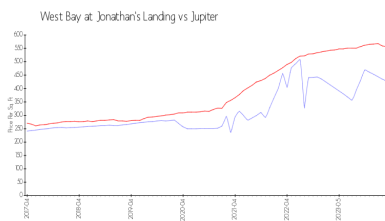
Number of units:	130
Number of active listings for rent:	0
Number of active listings for sale:	4
Building inventory for sale:	3%
Number of sales over the last 12 months:	8
Number of sales over the last 6 months:	5
Number of sales over the last 3 months:	5

## Building Association Information

Jonathan's Landing POA  
 3755 Barrow Island Road  
 Jupiter, FL 33477  
 Office Phone: 561-743-2032  
 Fax: 561-743-2062  
 Email: admin@jlpoa.com

<https://jonathanslandingpoa.com/the-villages/west-bay>

## Market Information



West Bay at Jonathan's Landing:	\$428/sq. ft.	Jupiter:	\$557/sq. ft.
Jupiter:	\$557/sq. ft.	Palm Beach:	\$475/sq. ft.

## Inventory for Sale

West Bay at Jonathan's Landing	3%
Jupiter	3%
Palm Beach	3%

## **Avg. Time to Close Over Last 12 Months**

West Bay at Jonathan's Landing	55 days
Jupiter	66 days
Palm Beach	56 days