

Unit 886 Coral Reef Way - Summer House at Old Ponte Vedra 1

886 Coral Reef Way - 923-948 Seashell Ln, Ponte Vedra Beach, FL, St. Johns 32082

Unit Information

MLS Number:	2018598
Status:	Active
Size:	734 Sq ft.
Bedrooms:	1
Full Bathrooms:	1
Half Bathrooms:	
Parking Spaces:	Additional Parking
View:	
List Price:	\$260,000
List PPSF:	\$354
Valuated Price:	\$215,000
Valuated PPSF:	\$293

The above valuated price is a baseline figure that does not take into account any specific renovation, upgrade, split, merge, or deterioration of the unit.

Building Information

Number of units:	246
Number of active listings for rent:	0
Number of active listings for sale:	3
Building inventory for sale:	1%
Number of sales over the last 12 months:	4
Number of sales over the last 6 months:	1
Number of sales over the last 3 months:	0

Building Association Information

Summer House at Old Ponte Vedra
 Management Office
 Phone: 904 285-4200
 Fax: 904-273-2552

<http://summerhouse.yolasite.com/>

Recent Sales

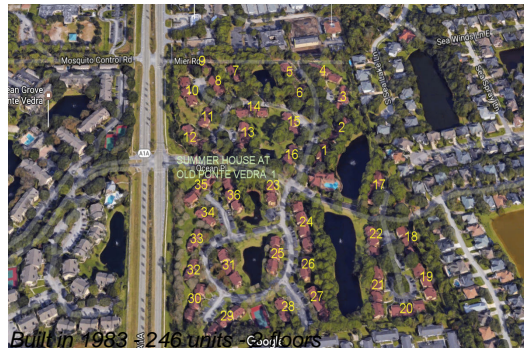
Unit #	Size	Closing Date	Sale Price	PPSF
	1,113 sq ft	Dec 2023	\$305,500	\$274
	1,215 sq ft	Nov 2023	\$365,000	\$300
	1,330 sq ft	Aug 2023	\$387,500	\$291
	734 sq ft	May 2023	\$281,300	\$383

Market Information

No Image Available	No Image Available
--------------------	--------------------

Summer House at Old Ponte Vedra 1:	\$292/sq. ft.	Ponte Vedra Beach:	\$380/sq. ft.
Ponte Vedra Beach:	\$380/sq. ft.	St. Johns:	\$340/sq. ft.

Inventory for Sale



Summer House at Old Ponte Vedra 1	1%
Ponte Vedra Beach	1%
St. Johns	1%

Avg. Time to Close Over Last 12 Months

Summer House at Old Ponte Vedra 1	n/a
Ponte Vedra Beach	51 days
St. Johns	61 days