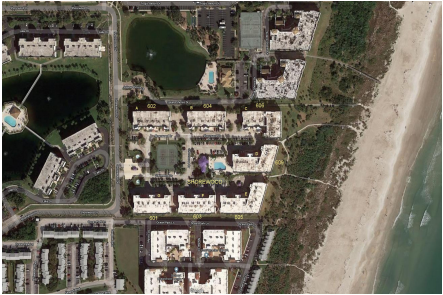


Shorewood A-B-C-D-E-F&G

601 Shorewood Dr, Cape Canaveral, FL, Brevard 32920

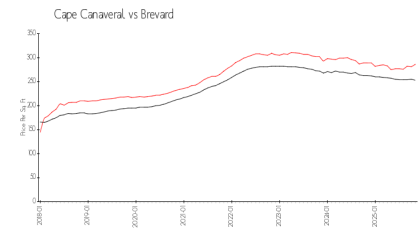
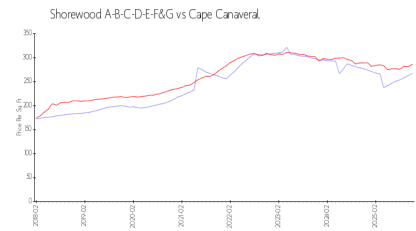
Building Information

Number of units:	196
Number of active listings for rent:	0
Number of active listings for sale:	6
Building inventory for sale:	3%
Number of sales over the last 12 months:	5
Number of sales over the last 6 months:	0
Number of sales over the last 3 months:	0



Built in 1997 - 196 units - 5 floors

Market Information



Shorewood A-B-C-D-E-F&G:	\$267/sq. ft.	Cape Canaveral:	\$286/sq. ft.
Cape Canaveral:	\$286/sq. ft.	Brevard:	\$253/sq. ft.

Inventory for Sale

Shorewood A-B-C-D-E-F&G	3%
Cape Canaveral	2%
Brevard	2%

Avg. Time to Close Over Last 12 Months

Shorewood A-B-C-D-E-F&G	77 days
Cape Canaveral	84 days
Brevard	297 days