

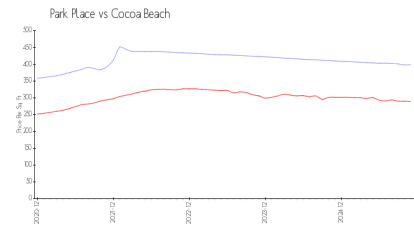
Park Place

85 S Atlantic Ave, Cocoa Beach, FL, Brevard 32931

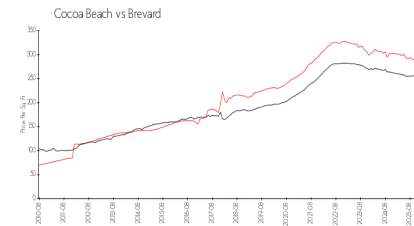
Building Information

Number of units:	24
Number of active listings for rent:	1
Number of active listings for sale:	1
Building inventory for sale:	4%
Number of sales over the last 12 months:	1
Number of sales over the last 6 months:	1
Number of sales over the last 3 months:	1

Market Information



Park Place: \$399/sq. ft.
Cocoa Beach: \$289/sq. ft.



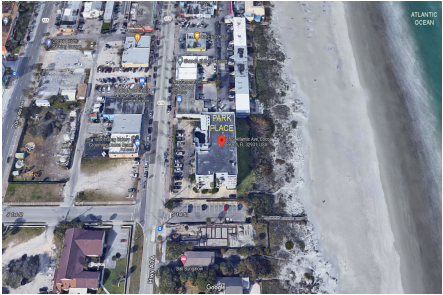
Cocoa Beach: \$289/sq. ft.
Brevard: \$252/sq. ft.

Inventory for Sale

Park Place	4%
Cocoa Beach	2%
Brevard	2%

Avg. Time to Close Over Last 12 Months

Park Place	78 days
Cocoa Beach	86 days
Brevard	296 days



Built in 1986 - 24 units - 5 floors