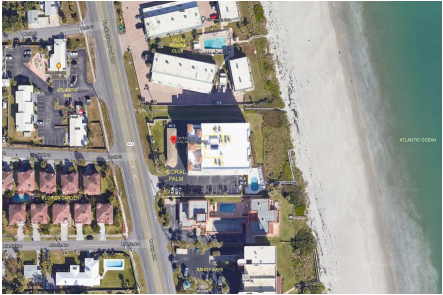


Coral Palm

2875 N Hwy A1A, Indialantic, FL, Brevard 32903

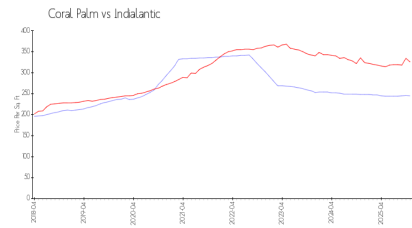
Building Information

Number of units:	31
Number of active listings for rent:	0
Number of active listings for sale:	0
Building inventory for sale:	
Number of sales over the last 12 months:	0%%
Number of sales over the last 6 months:	0
Number of sales over the last 3 months:	0

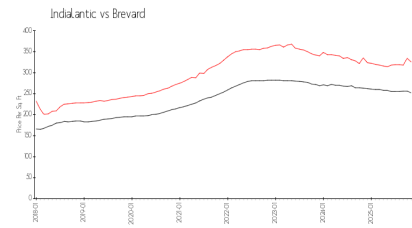


Built in 2003 - 31 units - 8 floors

Market Information



Coral Palm: \$245/sq. ft.
Indialantic: \$325/sq. ft.



Indialantic: \$325/sq. ft.
Brevard: \$253/sq. ft.

Inventory for Sale

Coral Palm
Indialantic
0%%

Brevard

Avg. Time to Close Over Last 12 Months

Coral Palm	22 days
Indialantic	73 days
Brevard	297 days