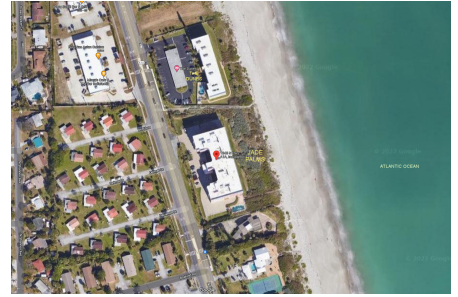


Jade Palm

1345 N Hwy A1A, Indialantic, FL, Brevard 32903

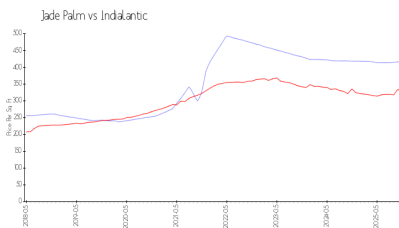
Building Information

Number of units: 50
Number of active listings for rent: 0
Number of active listings for sale: 0
Building inventory for sale:
Number of sales over the last 12 months: 0%
Number of sales over the last 6 months: 0
Number of sales over the last 3 months: 0
Jade Palm Condominium
Address: 1345 N Hwy A1A,
Indialantic, FL 32903
Phone: +1 321-984-9111
<https://>

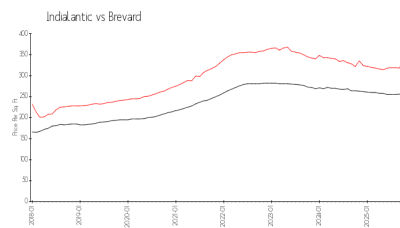


Built in 1998 - 50 units - 6 floors

Market Information



Jade Palm: \$415/sq. ft.
Indialantic: \$325/sq. ft.



Indialantic: \$325/sq. ft.
Brevard: \$253/sq. ft.

Inventory for Sale

Jade Palm
Indialantic
0%%

Brevard

Avg. Time to Close Over Last 12 Months

Jade Palm 20 days
Indialantic 73 days
Brevard 297 days