

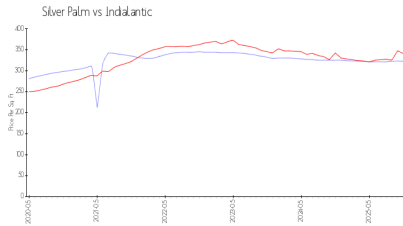
Silver Palm

2805 N Hwy A1A, Indialantic, FL, Brevard 32903

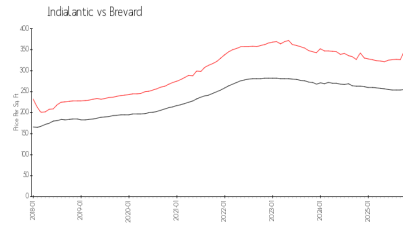
Building Information

Number of units:	25
Number of active listings for rent:	0
Number of active listings for sale:	1
Building inventory for sale:	4%
Number of sales over the last 12 months:	0
Number of sales over the last 6 months:	0
Number of sales over the last 3 months:	0

Market Information



Silver Palm: \$322/sq. ft.
Indialantic: \$340/sq. ft.



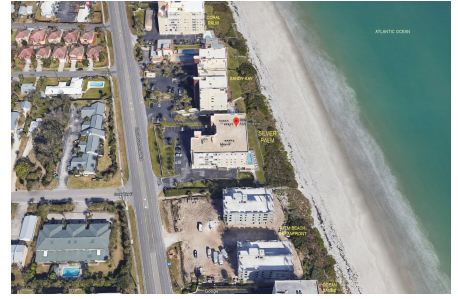
Indialantic: \$340/sq. ft.
Brevard: \$253/sq. ft.

Inventory for Sale

Silver Palm	4%
Indialantic	2%
Brevard	2%

Avg. Time to Close Over Last 12 Months

Silver Palm	80 days
Indialantic	73 days
Brevard	297 days



Built in 1996 - 25 units - 6 floors