

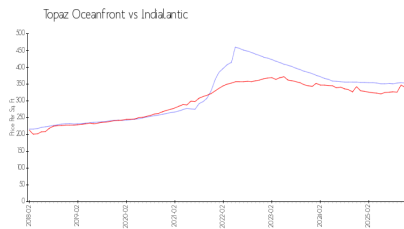
Topaz Oceanfront

735 N Hwy A1A, Indialantic, FL, Brevard 32903

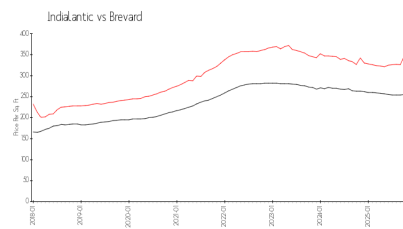
Building Information

Number of units:	28
Number of active listings for rent:	1
Number of active listings for sale:	0
Building inventory for sale:	
Number of sales over the last 12 months:	0%%
Number of sales over the last 6 months:	0
Number of sales over the last 3 months:	0

Market Information



Topaz Oceanfront: \$353/sq. ft.
Indialantic: \$340/sq. ft.



Indialantic: \$340/sq. ft.
Brevard: \$253/sq. ft.

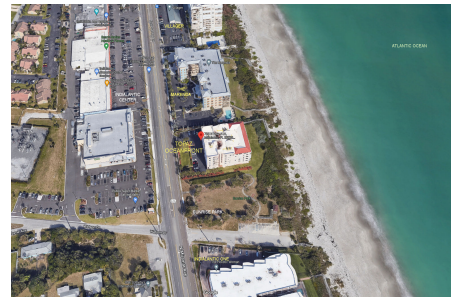
Inventory for Sale

Topaz Oceanfront
Indialantic
0%%

Brevard

Avg. Time to Close Over Last 12 Months

Topaz Oceanfront	194 days
Indialantic	73 days
Brevard	297 days



Built in 2002 - 28 units - 6 floors