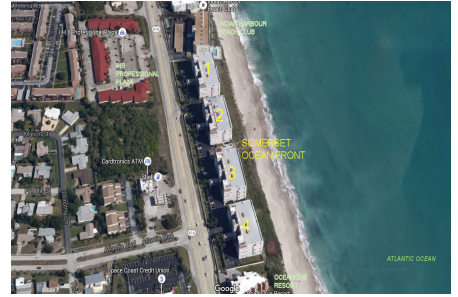


# Somerset Oceanfront 1 2 3&4

2065 Hwy A1A, Indian Harbour Beach, FL, Brevard 32937

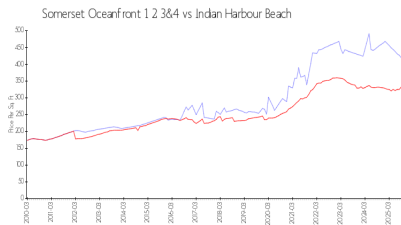
## Building Information

Number of units: 120  
Number of active listings for rent: 0  
Number of active listings for sale: 4  
Building inventory for sale: 3%  
Number of sales over the last 12 months: 2  
Number of sales over the last 6 months: 1  
Number of sales over the last 3 months: 0  
Somerset Condominium  
Address: 2065 Florida A1A,  
Indian Harbour Beach, FL 32937,  
Phone: +1 321-773-5214  
<https://www.somersetoceanfrontcondo.com/>

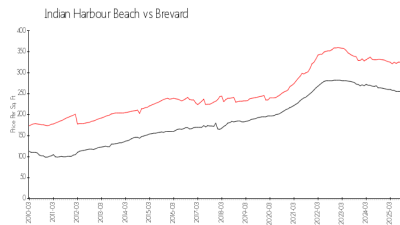


Built in 2003 - 120 units - 7 floors

## Market Information



Somerset Oceanfront 1 2 3&4: \$408/sq. ft.  
Indian Harbour Beach: \$337/sq. ft.



Indian Harbour Beach: \$337/sq. ft.  
Brevard: \$253/sq. ft.

## Inventory for Sale

Somerset Oceanfront 1 2 3&4: 3%  
Indian Harbour Beach: 2%  
Brevard: 2%

## Avg. Time to Close Over Last 12 Months

Somerset Oceanfront 1 2 3&4: 159 days  
Indian Harbour Beach: 84 days  
Brevard: 297 days