

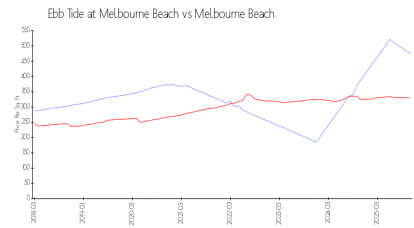
# Ebb Tide at Melbourne Beach

2999 S Hwy A1A, Melbourne Beach, FL, Brevard 32951

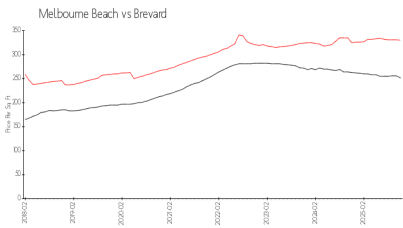
## Building Information

Number of units:	24
Number of active listings for rent:	0
Number of active listings for sale:	1
Building inventory for sale:	4%
Number of sales over the last 12 months:	1
Number of sales over the last 6 months:	1
Number of sales over the last 3 months:	0

## Market Information



Ebb Tide at Melbourne Beach: \$476/sq. ft.  
Melbourne Beach: \$330/sq. ft.



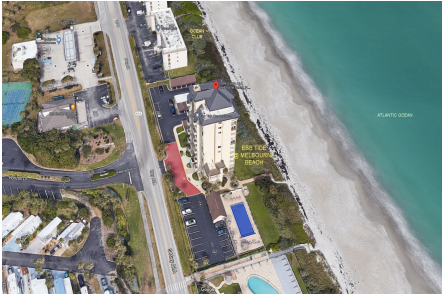
Melbourne Beach: \$330/sq. ft.  
Brevard: \$252/sq. ft.

## Inventory for Sale

Ebb Tide at Melbourne Beach	4%
Melbourne Beach	4%
Brevard	2%

## Avg. Time to Close Over Last 12 Months

Ebb Tide at Melbourne Beach	169 days
Melbourne Beach	96 days
Brevard	295 days



Built in 1985 - 24 units - 13 floors