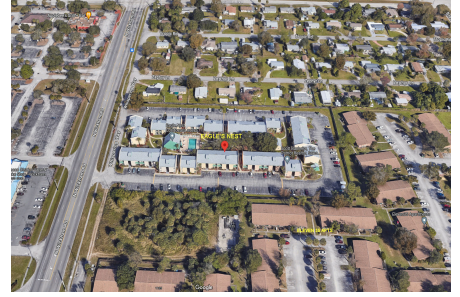


# Eagle's Nest

1225 N Wickham Rd, Melbourne, FL, Brevard 32935

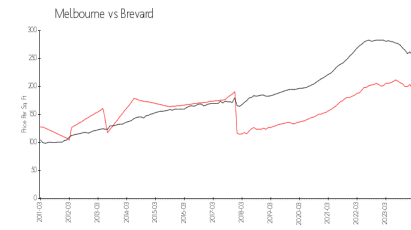
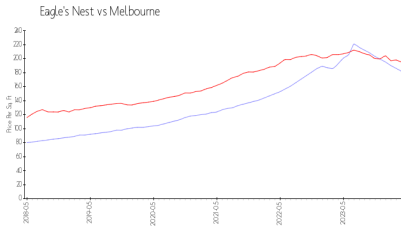
## Building Information

Number of units:	84
Number of active listings for rent:	0
Number of active listings for sale:	1
Building inventory for sale:	1%
Number of sales over the last 12 months:	1
Number of sales over the last 6 months:	1
Number of sales over the last 3 months:	1



Built in 1978 - 84 units - 2 floors

## Market Information



Eagle's Nest: \$182/sq. ft.  
Melbourne: \$195/sq. ft.

Melbourne: \$195/sq. ft.  
Brevard: \$226/sq. ft.

## Inventory for Sale

Eagle's Nest	1%
Melbourne	0%
Brevard	1%

## Avg. Time to Close Over Last 12 Months

Eagle's Nest	n/a
Melbourne	33 days
Brevard	41 days