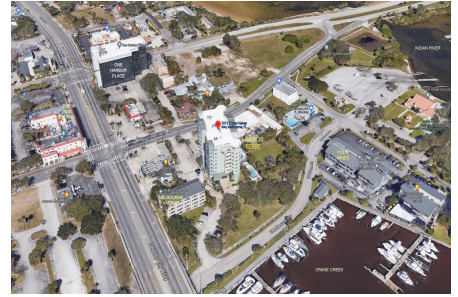


Harbor Edge

1211 E New Haven Ave, Melbourne, FL, Brevard 32901

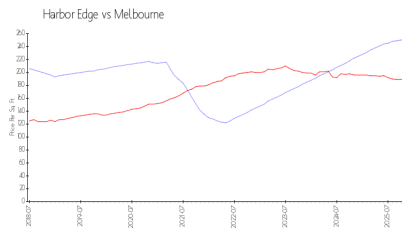
Building Information

Number of units:	27
Number of active listings for rent:	0
Number of active listings for sale:	2
Building inventory for sale:	7%
Number of sales over the last 12 months:	1
Number of sales over the last 6 months:	0
Number of sales over the last 3 months:	0
Harbor Edge Condo Association	
1211 East New Haven Avenue	
Melbourne, FL 32901	
(321) 723-9592	
https://	

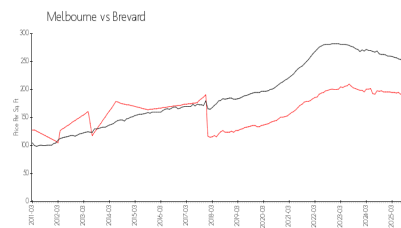


Built in 2009 - 27 units - 9 floors

Market Information



Harbor Edge: \$251/sq. ft.
Melbourne: \$189/sq. ft.



Melbourne: \$189/sq. ft.
Brevard: \$253/sq. ft.

Inventory for Sale

Harbor Edge	7%
Melbourne	3%
Brevard	2%

Avg. Time to Close Over Last 12 Months

Harbor Edge	12 days
Melbourne	1110 days
Brevard	297 days