

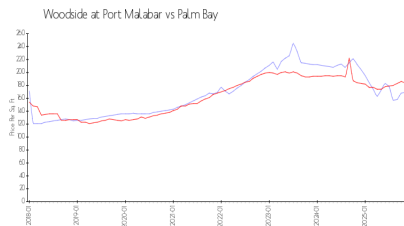
Woodside at Port Malabar

901 Sonesta Ave NE, Palm Bay, FL, Brevard 32905

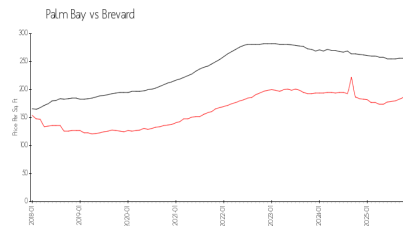
Building Information

Number of units:	216
Number of active listings for rent:	1
Number of active listings for sale:	3
Building inventory for sale:	1%
Number of sales over the last 12 months:	15
Number of sales over the last 6 months:	13
Number of sales over the last 3 months:	9

Market Information



Woodside at Port Malabar:	\$169/sq. ft.
Palm Bay:	\$184/sq. ft.



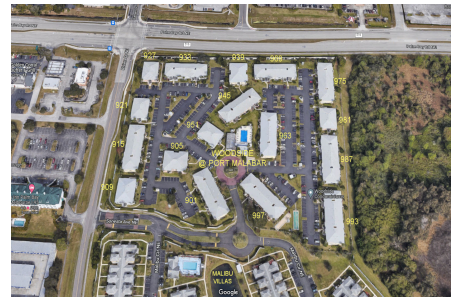
Palm Bay:	\$184/sq. ft.
Brevard:	\$252/sq. ft.

Inventory for Sale

Woodside at Port Malabar	1%
Palm Bay	2%
Brevard	2%

Avg. Time to Close Over Last 12 Months

Woodside at Port Malabar	80 days
Palm Bay	76 days
Brevard	295 days



Built in 1986 - 216 units - 2 floors