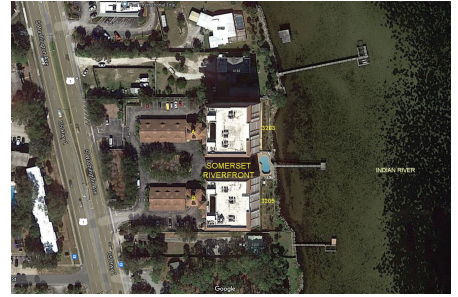


# Somerset Riverfront A&B

3203 S Washington Ave, Titusville, FL, Brevard 32780

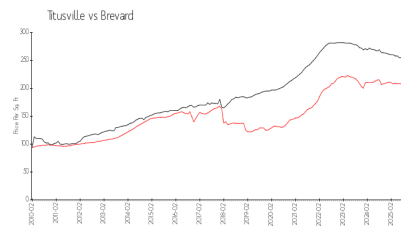
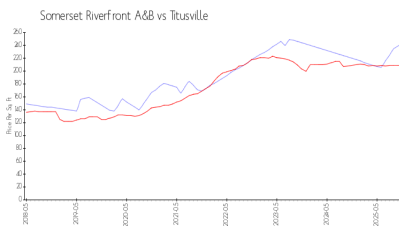
## Building Information

Number of units: 54  
Number of active listings for rent: 0  
Number of active listings for sale: 4  
Building inventory for sale: 7%  
Number of sales over the last 12 months: 2  
Number of sales over the last 6 months: 2  
Number of sales over the last 3 months: 1  
Somerset Riverfront Condo Association  
Address: 3205 S Washington Ave, Titusville, FL 32780  
Phone: +1 321-267-5628  
<https://>



Built in 2006 - 54 units - 10 floors

## Market Information



Somerset Riverfront A&B: \$243/sq. ft.  
Titusville: \$209/sq. ft.

Titusville: \$209/sq. ft.  
Brevard: \$252/sq. ft.

## Inventory for Sale

Somerset Riverfront A&B: 7%  
Titusville: 4%  
Brevard: 2%

## Avg. Time to Close Over Last 12 Months

Somerset Riverfront A&B: 220 days  
Titusville: 62 days  
Brevard: 296 days