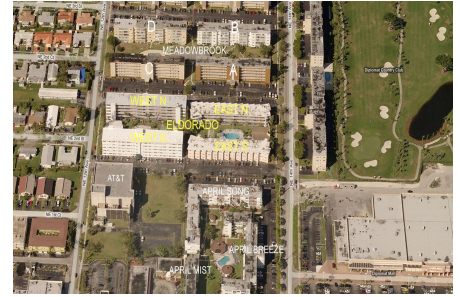


Eldorado Plaza East (North & South)

181 NE 14 Av, Hallandale Beach, FL, Broward 33009

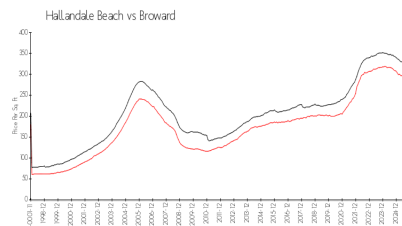
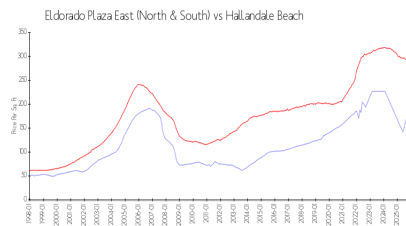
Building Information

Number of units: 72
 Number of active listings for rent: 0
 Number of active listings for sale: 4
 Building inventory for sale: 5%
 Number of sales over the last 12 months: 1
 Number of sales over the last 6 months: 1
 Number of sales over the last 3 months: 0
 Eldorado Plaza East Condo Association
 181-201 Ne 14th Ave.
 Hallandale Beach, FL
<https://>



Built in 1968 - 72 units - 3 floors

Market Information



Eldorado Plaza East (North & South): \$188/sq. ft.
 Hallandale Beach: \$293/sq. ft.

Hallandale Beach: \$293/sq. ft.
 Broward: \$311/sq. ft.

Inventory for Sale

Eldorado Plaza East (North & South): 5%
 Hallandale Beach: 5%
 Broward: 4%

Avg. Time to Close Over Last 12 Months

Eldorado Plaza East (North & South): 106 days
 Hallandale Beach: 101 days
 Broward: 87 days