

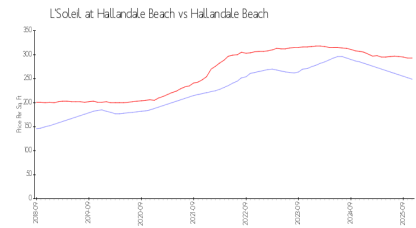
L'Soleil at Hallandale Beach

1100 NE 1 Ct, Hallandale Beach, FL, Broward 33009

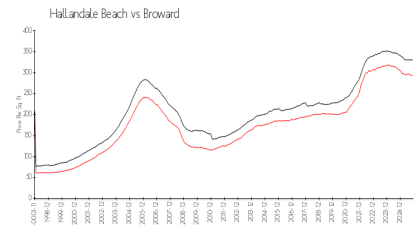
Building Information

Number of units:	59
Number of active listings for rent:	6
Number of active listings for sale:	7
Building inventory for sale:	11%
Number of sales over the last 12 months:	3
Number of sales over the last 6 months:	1
Number of sales over the last 3 months:	1

Market Information



L'Soleil at Hallandale Beach:	\$249/sq. ft.
Hallandale Beach:	\$293/sq. ft.



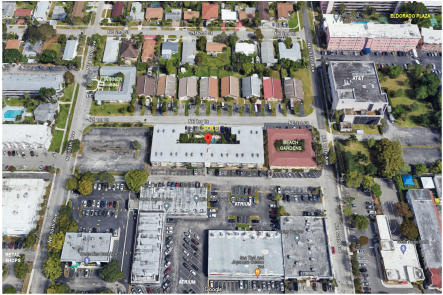
Hallandale Beach:	\$293/sq. ft.
Broward:	\$311/sq. ft.

Inventory for Sale

L'Soleil at Hallandale Beach	11%
Hallandale Beach	5%
Broward	4%

Avg. Time to Close Over Last 12 Months

L'Soleil at Hallandale Beach	65 days
Hallandale Beach	101 days
Broward	87 days



Built in 1970 - 59 units - 3 floors