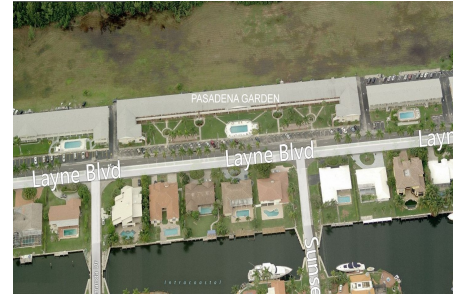


# Pasadena Garden

600 Layne Blvd, Hallandale Beach, FL, Broward 33009

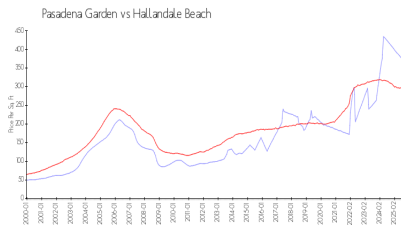
## Building Information

Number of units:	66
Number of active listings for rent:	2
Number of active listings for sale:	2
Building inventory for sale:	3%
Number of sales over the last 12 months:	0
Number of sales over the last 6 months:	0
Number of sales over the last 3 months:	0
Coastal Garden Condominium Inc	
630 Layne Boulevard Apartment 109	
Hallandale Beach, FL 33009-8613	
(954) 456-9783	
<a href="https://">https://</a>	

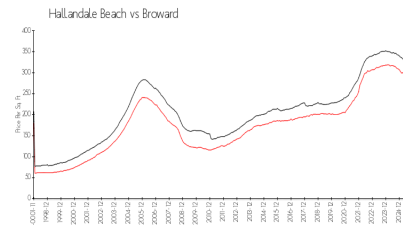


Built in 1965 - 66 units - 2 floors

## Market Information



Pasadena Garden: \$363/sq. ft.  
Hallandale Beach: \$293/sq. ft.



Hallandale Beach: \$293/sq. ft.  
Broward: \$311/sq. ft.

## Inventory for Sale

Pasadena Garden	3%
Hallandale Beach	5%
Broward	4%

## Avg. Time to Close Over Last 12 Months

Pasadena Garden	71 days
Hallandale Beach	101 days
Broward	88 days