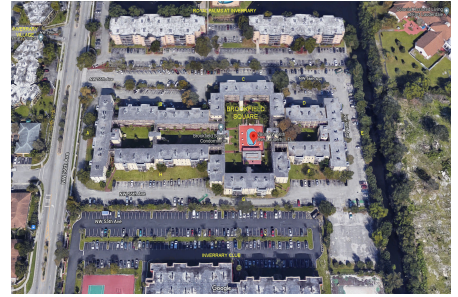


Brookfield Square

2800 NW 56 Ave, Lauderdale, FL, Broward 33313

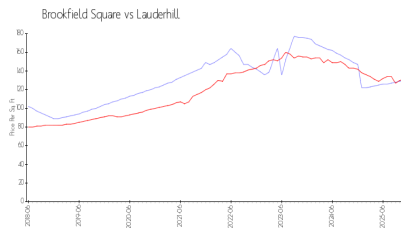
Building Information

Number of units: 200
Number of active listings for rent: 12
Number of active listings for sale: 17
Building inventory for sale: 8%
Number of sales over the last 12 months: 6
Number of sales over the last 6 months: 0
Number of sales over the last 3 months: 0
Brookfield Square Condominium
Address: 2800 NW 56th Ave,
Lauderhill, FL 33313
Phone: +1 954-714-0010
<https://>

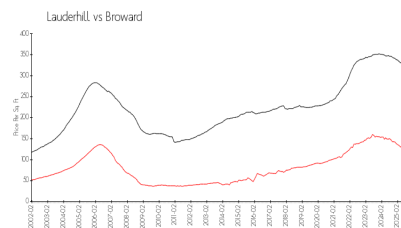


Built in 1979 - 200 units - 4 floors

Market Information



Brookfield Square: \$130/sq. ft.
Lauderhill: \$131/sq. ft.



Lauderhill: \$131/sq. ft.
Broward: \$311/sq. ft.

Inventory for Sale

Brookfield Square 8%
Lauderhill 5%
Broward 4%

Avg. Time to Close Over Last 12 Months

Brookfield Square 54 days
Lauderhill 80 days
Broward 87 days