

Claridge

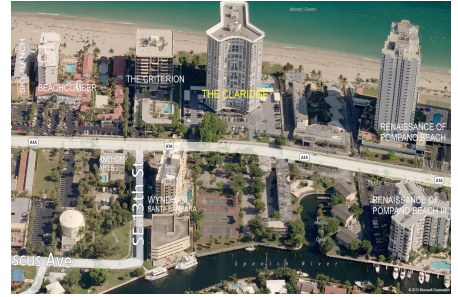
1340 S Ocean Blvd, Pompano Beach, FL, Broward 33062

Building Information

Number of units:	198
Number of active listings for rent:	1
Number of active listings for sale:	4
Building inventory for sale:	2%
Number of sales over the last 12 months:	8
Number of sales over the last 6 months:	3
Number of sales over the last 3 months:	1

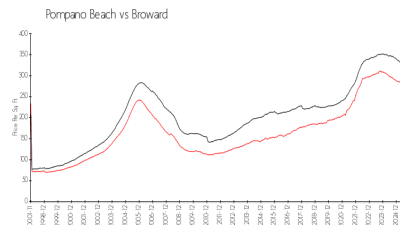
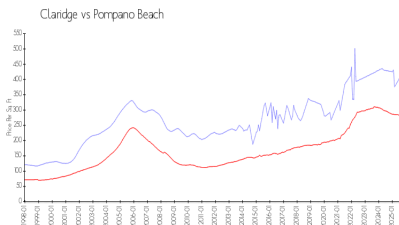
Claridge

1340 S Ocean Boulevard
Pompano Beach, FL 33062-6904
(954) 943-7882
<https://>



Built in 1973 - 198 units - 24 floors

Market Information



Claridge: \$429/sq. ft.
Pompano Beach: \$283/sq. ft.

Pompano Beach: \$283/sq. ft.
Broward: \$311/sq. ft.

Inventory for Sale

Claridge	2%
Pompano Beach	3%
Broward	4%

Avg. Time to Close Over Last 12 Months

Claridge	102 days
Pompano Beach	87 days
Broward	87 days