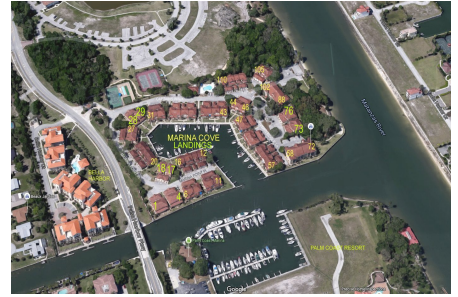


Marina Cove Landings

1 Marina Point Pl, Palm Coast, FL, Flagler 32137

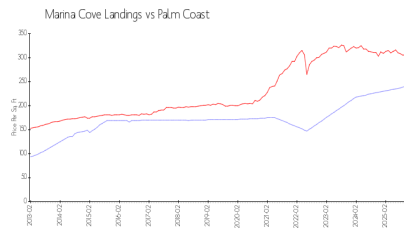
Building Information

Number of units: 12
Number of active listings for rent: 0
Number of active listings for sale: 0
Building inventory for sale:
Number of sales over the last 12 months: 0%
Number of sales over the last 6 months: 1
Number of sales over the last 3 months: 1
Marina Cove Landings
Condominium Association Inc
1410 Palm Coast Pkwy Nw
Palm Coast, Florida 32137-4721
<https://>

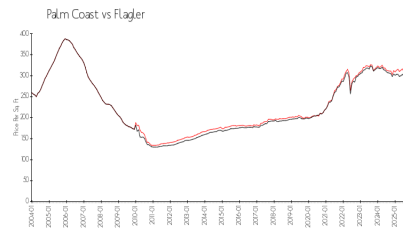


Built in 2004 - 12 units - 2 floors

Market Information



Marina Cove Landings: \$241/sq. ft.
Palm Coast: \$300/sq. ft.



Palm Coast: \$300/sq. ft.
Flagler: \$325/sq. ft.

Inventory for Sale

Marina Cove Landings
Palm Coast
0%%

Flagler

Avg. Time to Close Over Last 12 Months

Marina Cove Landings 14 days
Palm Coast 144 days
Flagler 140 days